

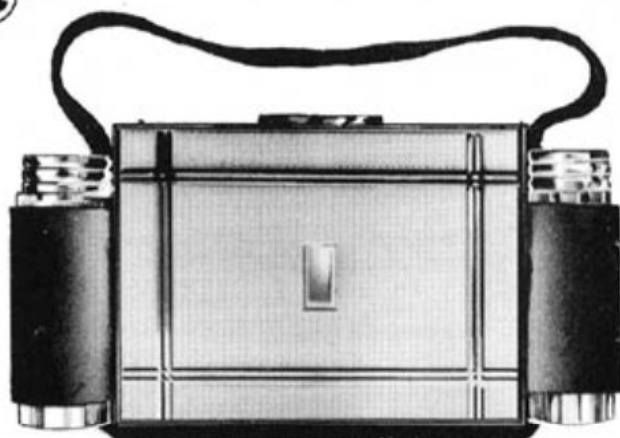
121 Party

KIGU OF LONDON

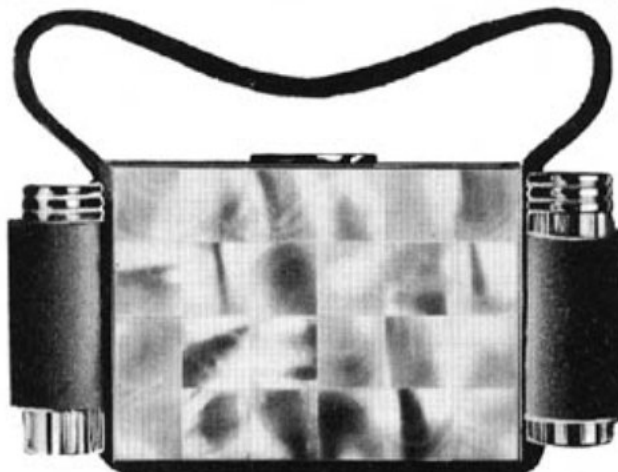
Cases 121



121-193 blue 600/- doz.
A gilt engine turned pattern frame surrounds the blue enamel panel decorated with scattered roses. Remainder of party case has engine turned pattern in jeweller's gilt finish.



121-01 528/- doz.
Lustrous gilt party case, contrasting admirably with the black suede handle. A classical engine turned design with mirror polished initial panel.



121-85 780/- doz.
The rich luxury of real mother of pearl makes this gilt party case an object of elegance and beauty. Reverse side in gilt engine turned pattern.



121-137 GSP 720/- doz.
A gleaming silver plated party case. On the satin smooth background a graceful design of butterfly and leaves in glittering gilt.



121-123 GSP 720/- doz.
This satin silver plated party case has three exquisitely engraved flowers in lustrous gilt finish.

Combination "Party Case" consisting of oblong loose powder compact, king size cigarette case, detachable lipstick case on one side and perfume bottle housed in metal case on the other. Elegant black real suede forms the carrying case. Size $5\frac{1}{4}$ " x $2\frac{3}{4}$ ". Supplied in silk lined luxurious presentation box.



121-02 528/- doz.
A silky effect is achieved by the intricate engine turned design of this Party Case in jeweller's gilt finish.



121-06 528/- doz.
Classical engine turned pattern in jeweller's all gilt finish. A most elegant design.

88-914 MJ/17 282/- doz.
Elegant woven design with graceful leaf jewel mount set with stones. Glittering all gilt compact in jeweller's finish.



88-288 blue 240/- doz.
Birds in flight on translucent blue background decorate this gilt convertible compact with built in highly polished gilt lipstick case.

88-134 GSP 300/- doz.
Bands of engraved design in silver plate contrast most effectively with the highly polished gilt line design and gilt lipstick case.



88-134 240/- doz.
Also available in all gilt jeweller's finish.

This elegantly shaped, slim square compact has its own built-in lipstick case. The lipstick case will take most makes of cartridge type (swivel) lipsticks. Patented fluted edge and automatically opening inner lid. Size $3\frac{1}{4}$ " x $3\frac{1}{4}$ ".