

182 Stuart

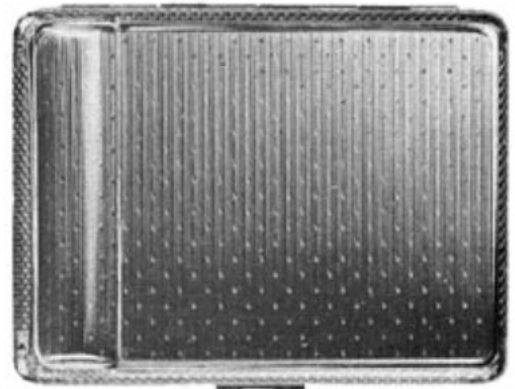
KIGU OF LONDON

Stuart 182

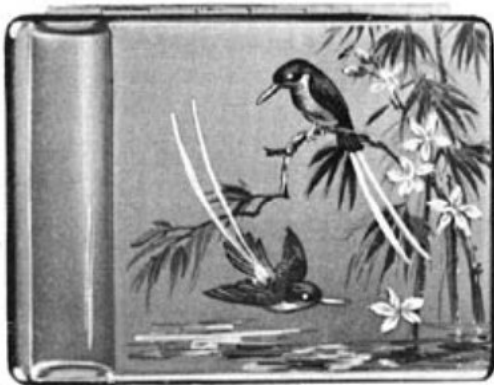


182-01 204/- doz.
An all gilt compact. The classical barley engine turned design forms a contrasting background for the highly polished bright gilt leaf design.

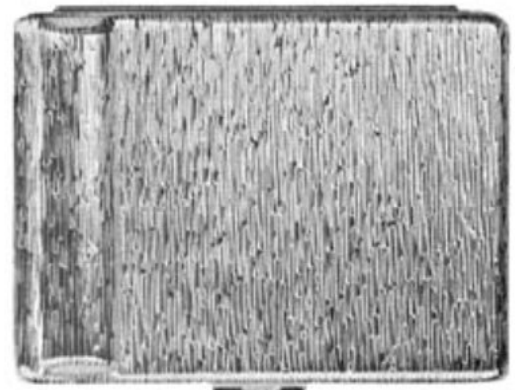
182-01 GSP 267/- doz.
As above in silver plate decorated with a bright gilt leaf.



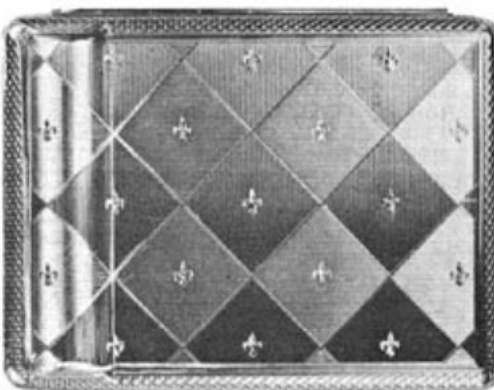
182-605 204/- doz.
Delicate spot and line engine turned design framed in barley border makes this a highly desirable compact in jewellers' gilt finish.



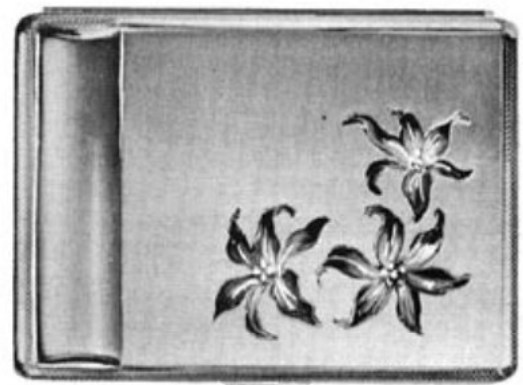
182-328 SP blue 267/- doz.
Delicate pale blue enamel on silver plate forms the background for the colourful design of Australian kingfishers. A delightful silver plated compact.



182-716 204/- doz.
Florentine deep bark design decorates top and reverse of this very attractive all gilt compact.



182-07 204/- doz.
A compact in highly polished jeweller's gilt finish showing an attractive design of diamond shape segments with bright fleur de lys central raised motifs.



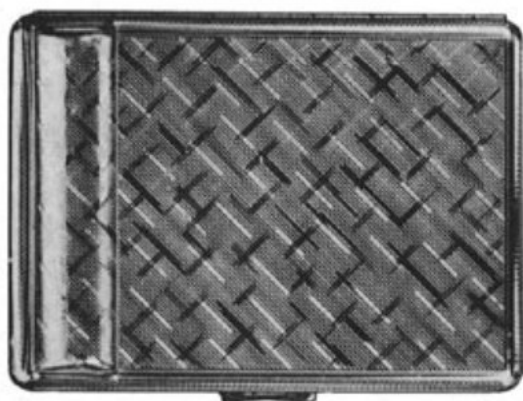
182-123 GSP 267/- doz.
The smooth satin top of this silver plated compact forms a beautifully contrasting background to the three large flower motifs in bright gilt finish.

Oblong compact of elegant proportions with rounded corners enclosing a lipstick case to take most types of lipstick refills. Automatically opening spill proof inner lid (patented). Size $3\frac{1}{4}'' \times 2\frac{1}{2}''$.

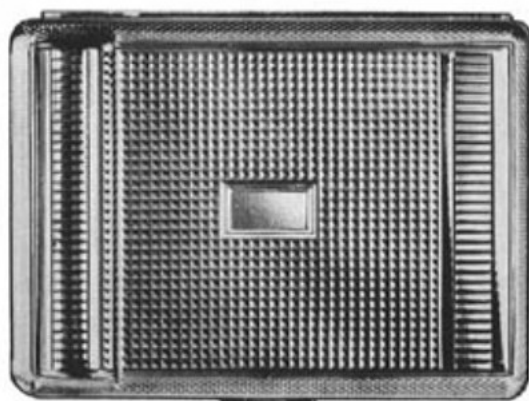
182 Stuart

KIGU OF LONDON

Stuart 182



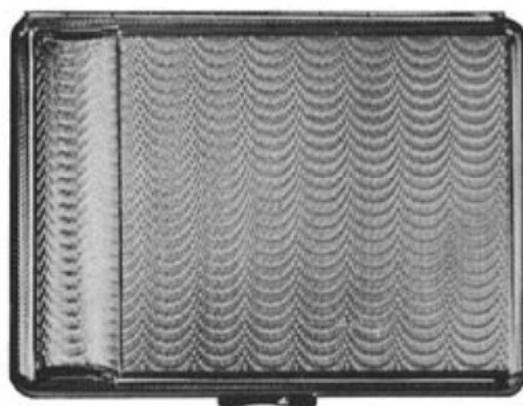
182-107 204/- doz.
Shimmering gilt engine turned pattern in florentine finish decorates this elegant compact.



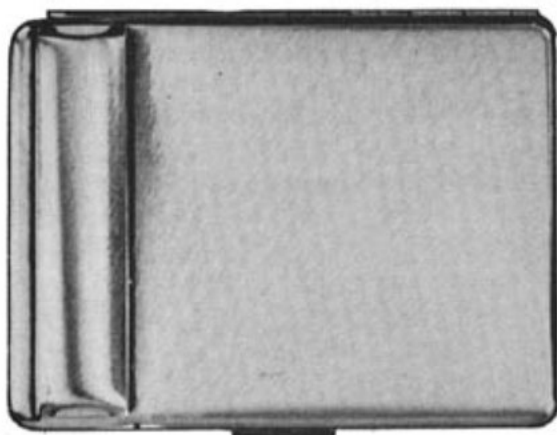
182-06 204/- doz.
A gilt compact in highly polished jeweller's finish in engine turned hobnail design and with central initial panel.



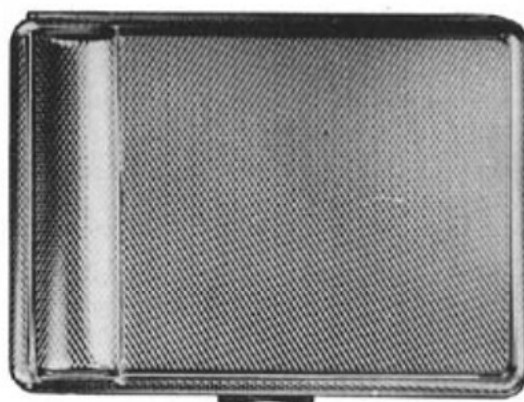
182-21 CP/22 282/- doz
On the highly polished jet black enamel of this gilt compact is placed a jewel mount with a real cultured pearl in its centre.



182-102 204/- doz.
Very finely engraved engine turned design distinguishes this well proportioned compact in high class jeweller's gilt finish.



182-100 216/- doz.
Lustrous gilt brush finish gives an exclusive touch to this oblong compact of fine proportions, in gilt jeweller's finish.



182-02 204/- doz.
The classical beauty of the fine barley engine turned pattern enhances this attractive all gilt compact.

Oblong compact of elegant proportions with rounded corners, enclosing a lipstick case to take most types of lipstick refills. Automatically opening spill proof inner lid (patented). Size $3\frac{1}{4}$ " x $2\frac{1}{2}$ ".