

51**Mini****KIGU
OF LONDON****Mini****51**

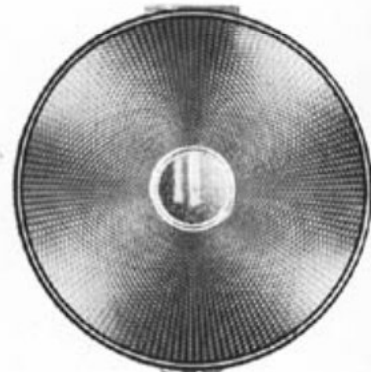
51-762 144/- doz.
Colourful floral perspex
insert in gleaming gilt
compact.



51-120 SP 144/- doz.
Silver plated compact in
glittering engine turned
design.



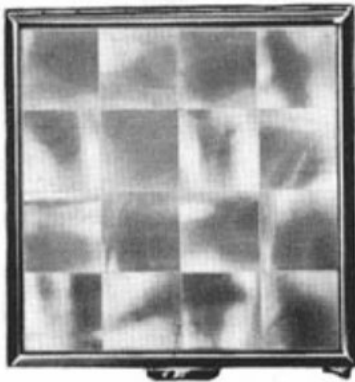
51-289 blue 117/- doz.
Translucent blue enamel
with vivid floral design.



51-12 102/- doz.
Classical engine turned pattern
in jeweller's gilt finish.

69**Karette****69**

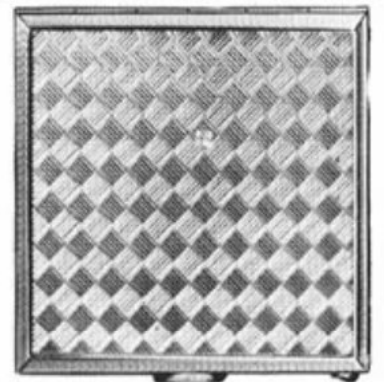
Wafer thin loose powder compact with spill proof inner lid, opened by patented remote control spring catch. Size $2\frac{1}{2}$ " x $2\frac{1}{2}$ ". Supplied individually boxed, complete with puff, sifter and pochette, packed six to an outer.



69-85 240/- doz.
Real mother of pearl in gilt
frame.



69-21 CP/22 240/- doz.
Cultured pearl jewel mount on
black enamel.



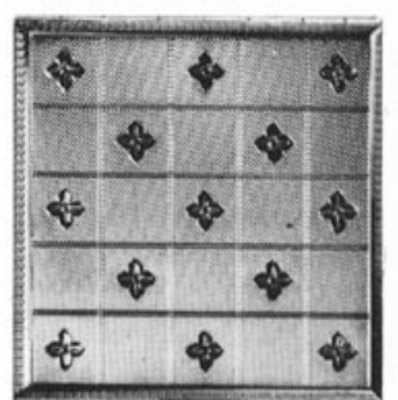
69-04 147/- doz.
Gilt engine turned pattern in
woven design.



69-14 147/- doz.
Gilt engine turned pattern
with initial panel.



69-22 MJ/16 240/- doz.
Grey-green enamel with gilt
topaz jewel mount.



69-103 147/- doz.
Gilt bright flowers on fine
engine turned pattern.



51-21 CP/21 174/- doz.
A black enamel compact provides an impressive background for the jewel ornament set with real cultured pearl.



51-04 102/- doz.
Gilt engine turned sunray pattern from an off-centre oblong initial panel in lustrous jeweller's finish.



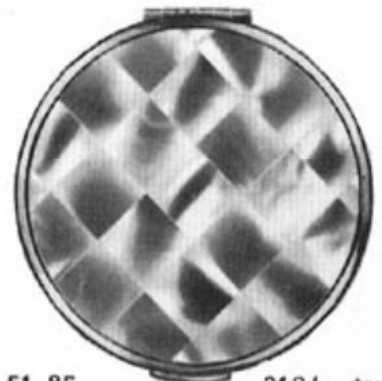
51-26 MJ/905rh. 150/- doz.
Translucent deep azure blue background complemented by a scintillating jewel ornament in jeweller's gilt finish.



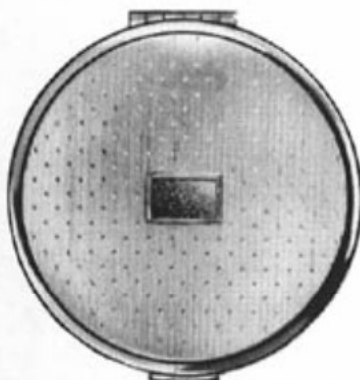
51-346 102/- doz.
A delicate floral pattern in pastel shades on a gilt satin smooth background.



51-27 MJ/880g. 150/- doz.
Translucent warm claret background with delightful central jewel mount in all gilt finish.



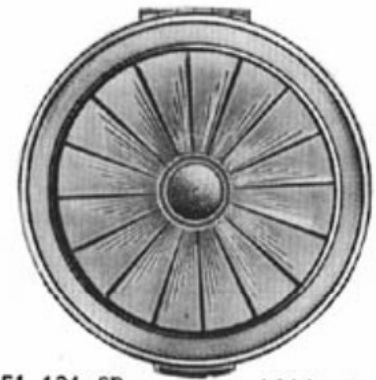
51-85 210/- doz.
Real inlaid mother of pearl has luminous beauty and natural opalescent quality.



51-605 102/- doz.
Classic engine turned spot and line design with central initial panel in gilt jeweller's finish.



51-709 102/- doz.
A gilt engine turned design with engraved scroll border and initial panel in centre.



51-121 SP 144/- doz.
Silver plated compact decorated with graduated radial engine turned design.

The smallest round Kigu compact ideally suited for the teenager. It has the patented fluted Kigu construction which makes it an outstanding spill-proof compact. Size $2\frac{1}{2}$ " dia. Supplied individually boxed, complete with puff, sifter and pochette, six to an outer.