

58 Cherie

**KIGU**  
OF LONDON

Cherie 58



58-24 E2 turq. 300/- doz.  
Flawless turquoise enamel forms the enchanting background for the real enamel rose plaque in the centre. A gleaming gilt border supplies the final touch of perfection on this gilt compact.



58-134 174/- doz.  
Bright highly polished bands display to advantage a broad central panel of engraved design.

58-134 GSP 234/- doz.  
As above, but silver plated, central flower band in gilt.

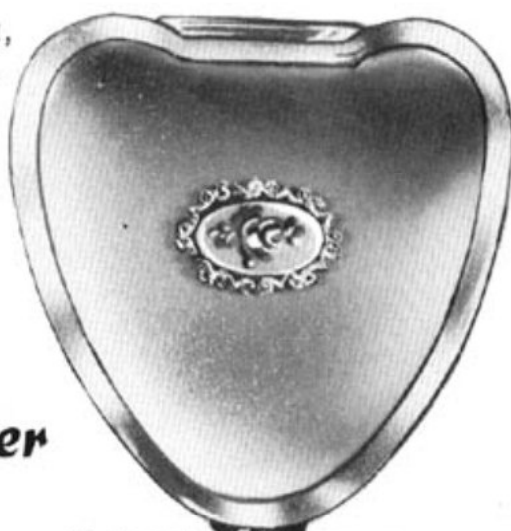


58-24 X turq. 252/- doz.  
The central glittering initial jewel mount is set on the flawless turquoise enamel of this gilt compact. Initial instantly exchangeable and one additional free initial supplied in the form of a voucher.



58-815 174/- doz.  
The skilful engine turned design in jeweller's gilt finish evokes the beauty of a dazzling catherine wheel.

### Loose powder



58-10 SP/E1 300/- doz.  
A heart shaped compact in satin silver plate with centrally mounted oval real enamel rose plaque in jewelled setting. The design is beautifully complemented by a highly polished border.

This beautifully designed heart shaped compact is one of the most popular gift lines. Its unusual shape and extreme slimness delights the heart of young and old. Size 3" x 3". Supplied individually boxed, complete with puff, sifter and pochette, packed six to an outer.



**58-815 SP X** 288/- doz.  
 The lustrous engine turned design of this silver plated compact draws the eye to the central glittering jewel mount with initial. Initial instantly exchangeable and one additional initial supplied free in the form of a voucher.

### Loose powder



**58-10 SP/MJ** 267/- doz.  
 Smooth silvery satin surrounded by a gleaming bright silver border provides the perfect setting for the delicate rhodium plated jewel mount of this silver plated compact.



**58-717 GSP** 234/- doz.  
 The background of this silver plated compact brings to mind the delicate shimmer of silk. An artistic design of birds and leaves in gleaming gilt finish.



**58-17** 173/- doz.  
 A graceful design of leaping deer on a fine engine turned background enhances this gilt compact.  
**58-17 GSP** 234/- doz.  
 As above in two tone gilt and silver plate.



**58-130 GSP** 234/- doz.  
 A silver plated compact of great elegance with satin background which sets off the pattern of bright gilt bluebells and leaves.



**58-107 GSP** 234/- doz.  
 Silver plated compact with fine satin background highlighted by a design of butterfly and flowers in bright gilt.

This beautifully designed heart shaped compact is one of the most popular gift lines. Its unusual shape and extreme slimness delights the heart of young and old. Size 3" x 3". Supplied individually boxed, complete with puff, sifter and pochette, packed six to an outer.



58-357 blue 204/- doz.  
 Deep translucent blue background provides the perfect setting for the colourful design of swans and cygnets on this gilt compact.

### Loose powder



58-24 X white 252/- doz.  
 The central glittering initial jewel mount is set on the flawless white enamel of this gilt compact. Initial instantly exchangeable and one additional free initial is supplied in the form of a voucher.



58-356 blue 204/- doz.  
 Heart shaped gilt compact with translucent blue enamel background displaying a design of colourful flowers.



58-21 MJ 240/- doz.  
 Lustrous black enamel highlighted by a slim gilt border forms the background for the delicate jewel mount.



58-21 CP/24 300/- doz.  
 A cultured pearl set in a dainty jewel mount on jet black enamel embellishes this exquisite gilt compact in jeweller's finish.



58-324 SP 222/- doz.  
 Silver plated satin compact with a spray of red carnations and mimosa.

This beautifully designed heart shaped compact is one of the most popular gift lines. Its unusual shape and extreme slimness delights the heart of young and old. Size 3" x 3". Supplied individually boxed, complete with puff, sifter and pochette, packed six to an outer.