

615 Diana

KIGU
OF LONDON

Diana 615

**Convertible
for loose or
solid powder**



615-355 117/- doz.
Delicately coloured arrangement of flowers on smooth gilt satin background. A delightful gift.



615-335 117/- doz.
Gilt satin is the background for this charming compact with colourful thistle design. An ideal gift especially for a friend north of the border.



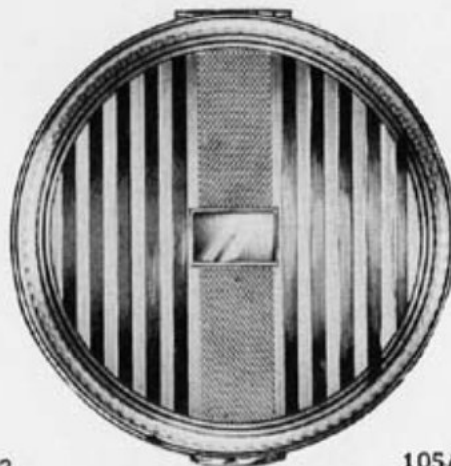
615-732 105/- doz.
An ideal convertible gift compact in all gilt featuring famous London landmarks on fine linen effect engine turned background design.



615-364 blue 144/- doz.
Bright floral bunch on deep translucent blue background adorns this gilt convertible compact.



615-343 144/- doz.
Motif of flowers in their natural colourings on translucent blue enamel background decorates this attractive gilt convertible compact.



615-112 105/- doz.
Attractive engine turned design of fine lines alternating with bright segments distinguishes this convertible compact in all gilt jeweller's finish.

Attractively shaped convertible compact with inclined side suitable for loose or solid powder. A pleasing compact with spring thumb catch. Size 3" dia. Supplied individually boxed, complete with puff, sifter and pochette, packed six to an outer.

615 Diana

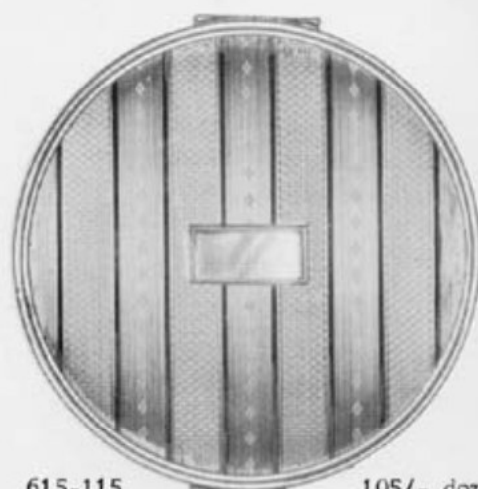


Diana 615

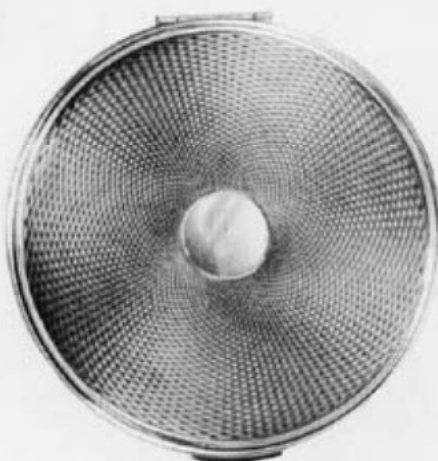
**Convertible
for loose or
solid powder**



615-328 blue 1.44/- doz.
Colourful design of Australian kingfishers
on translucent blue background.



615-115 105/- doz.
Alternate bands of fine lines and barley
engine turned design in gilt finish.



615-12 105/- doz.
Circular barley engine turned
design in gilt with highly polished
central initial panel. This compact
will never fail to please.



615-108 GSP 189/- doz.,
Contrasting glittering gilt design of flowers
and bird in flight on the satin silver plated
background.



615-113 105/- doz.
An attractive pattern in all gilt - diamonds
within diamonds in an engine turned design
frame.



615-127 GSP 189/- doz.,
The attractive silver plated
engine turned design forms a
pleasing background for the gilt
spray of leaves.



615-114 105/- doz.
Glittering mesh pattern on a
bright gilt polished background.

Attractively shaped convertible compact with inclined side suitable for loose or solid powder. A pleasing compact with spring thumb catch. Size 3" dia. Supplied individually boxed, complete with puff, sifter and pochette, packed six to an outer.

615 Diana



Diana 615

**Convertible
for loose or
solid powder**



615-26 MJ/31 174/- doz.
A glittering rhodium plated jewel mount is effectively placed on the deep blue translucent background of this gilt convertible compact.



615-27 MJ/17 174/- doz.
A translucent claret background is the setting for the glittering ornamental leaf in the centre of this gilt convertible compact. Centre vein of leaf set with topaz stones.



615-544 SP/E5 222/- doz.
Attractive satin and bright design adorns this silver plated compact which has in its centre a real enamel rose plaque in a glittering, jewelled frame.



615-85 228/- doz.
The translucent beauty of this real mother of pearl decorates this gilt convertible compact in high class jeweller's finish.



615-135 105/- doz.
A highly polished gilt compact with an intricate engine turned design forming a shell pattern indicating rare and delicate skill.



615-29 E3 210/- doz.
A real enamel rose plaque in a jewelled filigree setting forms the central ornament on the very pleasing tortoiseshell coloured background of this gilt compact.

Attractively shaped convertible compact with inclined side suitable for loose or solid powder. A pleasing compact with spring thumb catch. Size 3" dia. Supplied individually boxed, complete with puff, sifter