

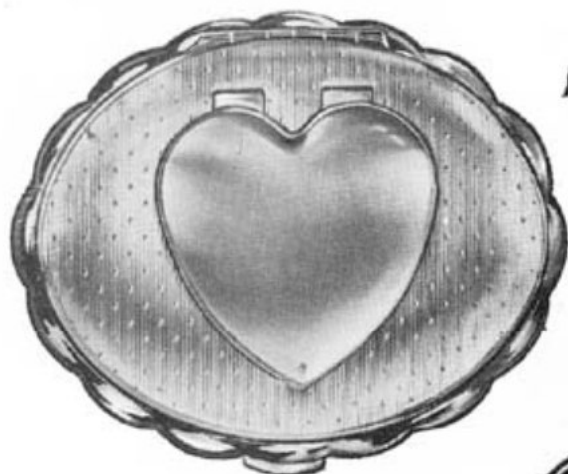
73



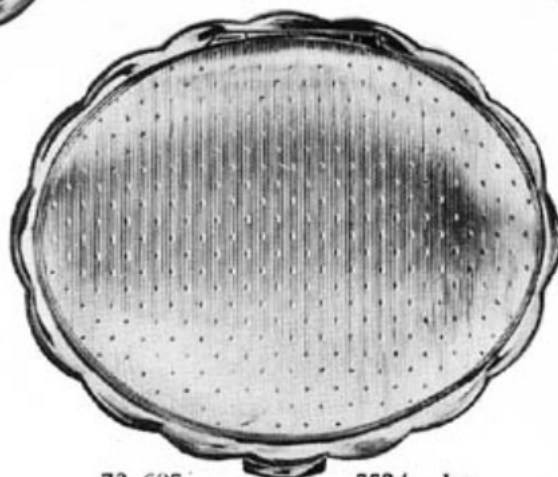
73

# Minuette

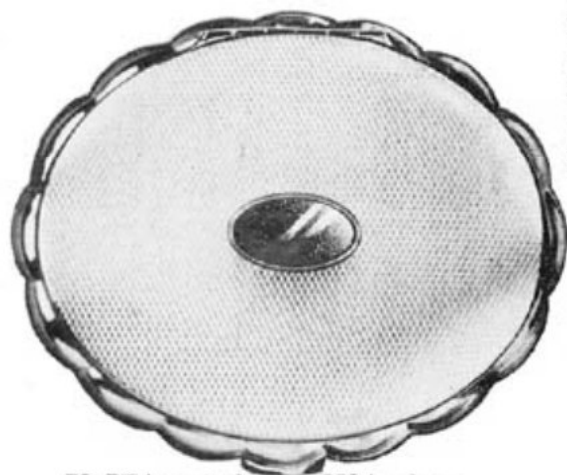
*Loose powder*



73-673/20 600/- doz.  
The beautifully finished smooth gilt satin locket cover the photo frame for the picture of the loved one, well protected by a secret opening device (patented). This and music, too; truly an unusual gift.



73-605 552/- doz.  
The delicate engine turned design of this gilt musical in jeweller's finish contrasts happily with the highly polished scalloped base.



73-ET/assorted 552/- doz.  
Various classical engine turned designs decorate these musical compacts in highly polished jeweller's gilt finish. The gently domed lid harmonises with the rounded scallops forming the base.

Most popular musical compact in scalloped oval shape. Has a deep well for powder and spill proof inner lid. Packed individually in silk lined presentation box. Wide range of popular and classical tunes. Size  $3\frac{1}{4}" \times 2\frac{3}{4}"$ .

# Musical



73-673/20 600/- doz.  
Yet another "Secret Locket" musical compact. Here the background design of the compact is more elaborate - amongst glittering floral motifs a ribbon winds its way, a charming musical compact in jeweller's all gilt finish.



73-10 SP MJ/1 660/- doz.  
An exquisite orchid shaped jewel mount glitters in the centre of the smooth silvery satin top of this compact. An enchanting silver plated musical of graceful proportions.

73

**KIGU**  
 OF LONDON

73

# Minuette



73-21 E3 672/- doz.

The highly polished scalloped gilt base sets off to advantage the jet black enamel top which forms the background for the centrally placed real enamel rose plaque in its jewelled surround. A gift to delight the eye.



73-27 MJ/17 672/- doz.

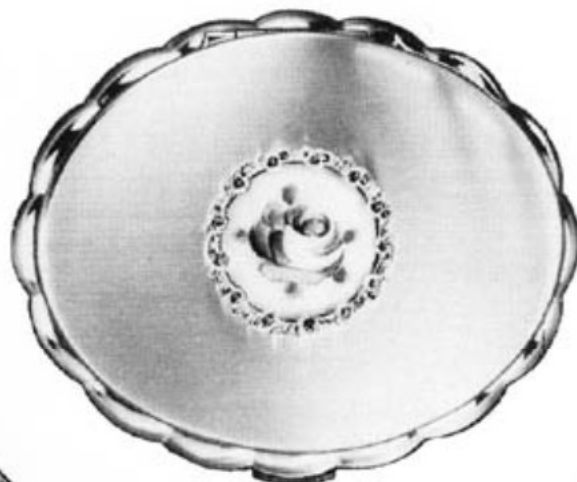
The rich tone of the claret translucent enamel sets off to perfection the glittering gilt leaf shaped jewel mount set with topaz diamante stones. A gilt musical compact of supreme elegance.



73-21 SP/MJ/1 720/- doz.

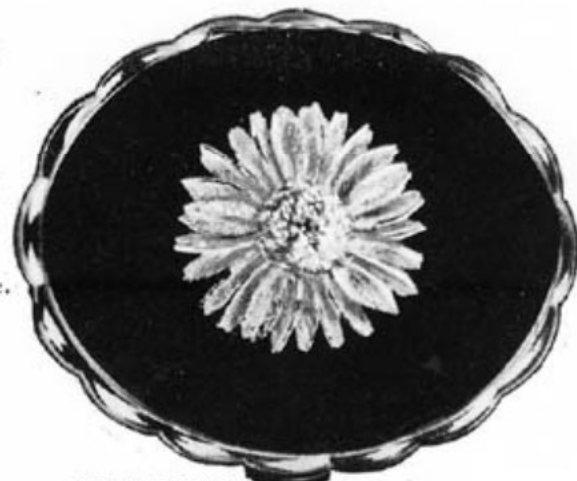
A rhodium plated orchid jewel is mounted in the centre of the jet black top of this silver plated musical compact. A gift that will give constant pleasure to its proud possessor.

# Musical



73-10 SP E5 660/- doz.

The smooth satin silver plated top forms a most pleasing background for the real enamel rose plaque set in a jewelled frame. The highly polished bright silver plated base harmonises the whole into a most exquisite musical compact.



73-21 MJ/14 672/- doz.

On the jet black enamel is displayed an exquisite jewel mount, its centre glitters with a cluster of topaz diamante stones. The highly polished gilt base contrasts most effectively with the jet black enamel of this superb musical compact.

Most popular musical compact in scalloped oval shape. Has a deep well for powder and spill proof inner lid. Packed individually in silk lined presentation box. Wide range of popular and classical tunes. Size  $3\frac{1}{4}'' \times 2\frac{3}{4}''$ .