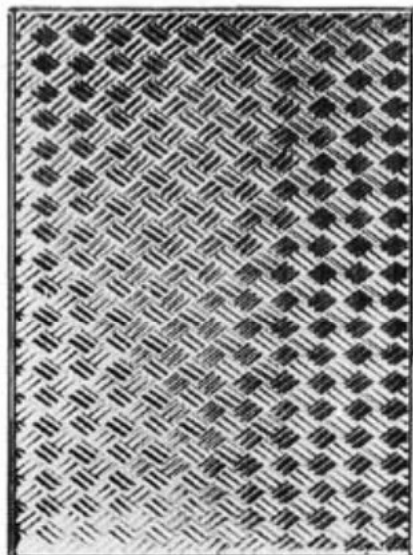
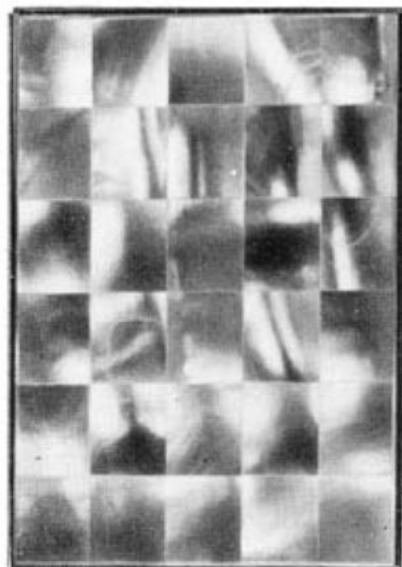


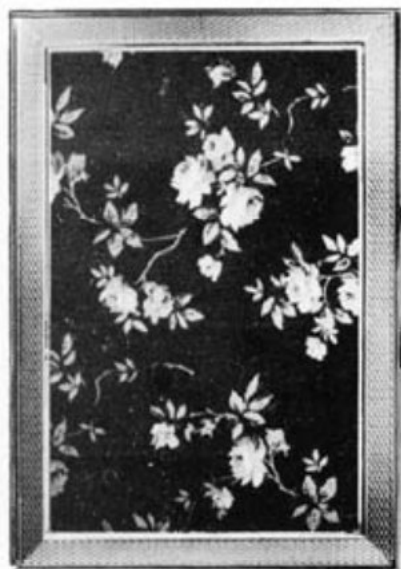
90-685 300/- doz.
The loveliness of real mother of pearl enhances the attractive appearance of this gilt case.



90-04 129/- doz.
Masterly skill is displayed in the intricate woven design of this case in jeweller's gilt finish.



90-85 342/- doz.
Real inlaid mother of pearl has the rich, luminous beauty and natural opalescent quality to delight those seeking perfection.



90-193 blue 180/- doz.
Roses scattered on a translucent blue background adorn this gilt cigarette case.

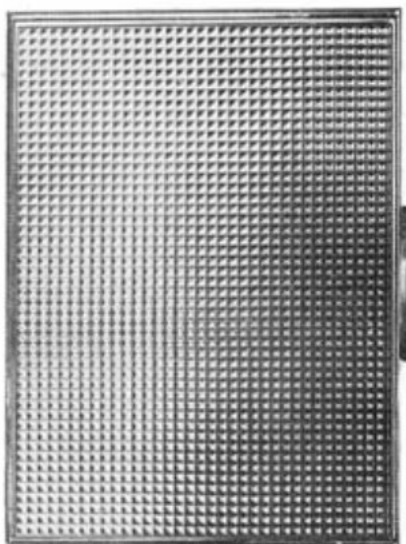


90-336 147/- doz.
Gleaming "barley" engine turned design borders the smooth satin gilt forming the background for the red roses in life like colouring.

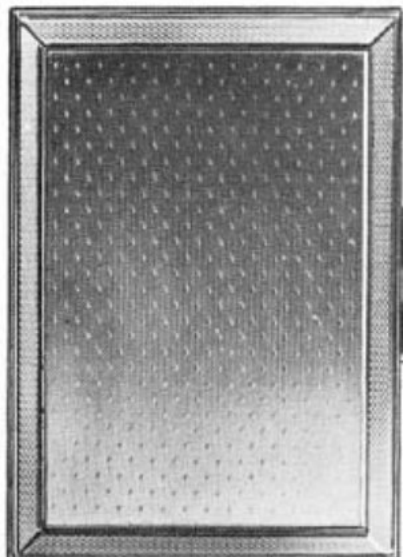


90-304 blue 180/- doz.
Delicately coloured butterflies and flowers on deep blue translucent enamel create a most pleasing effect on this gilt cigarette case.

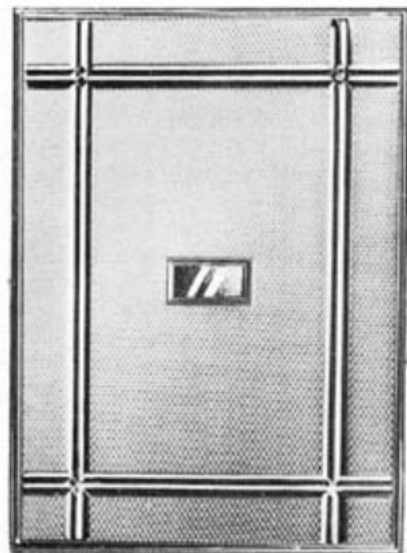
Slender oblong cigarette cases for ladies, king size or normal cigarettes. Loose powder compacts in identical shape and designs can be obtained by substituting prefix, 190- in place of 90-. Size $3\frac{1}{2}$ " x $2\frac{1}{2}$ ". Supplied individually boxed, packed six to an outer.



90-06 129/- doz.
 A highly polished all gilt case in hobnail engine turned pattern. An elegant classical design.



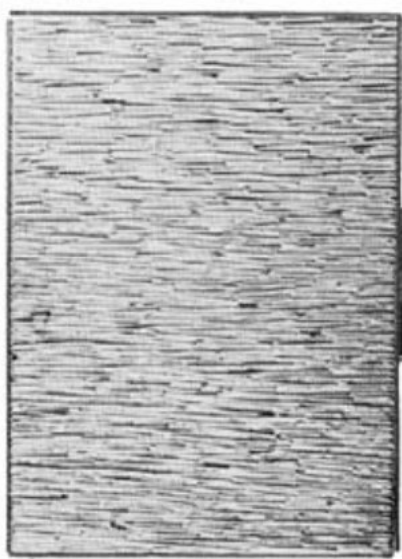
90-605 129/- doz.
 A fine engine turned barley pattern borders the delicate spot and line engine turned design of this all gilt case.



90-01 129/- doz.
 The classical beauty of this simple engine turned design appeals to all. A mirror polished initial panel completes this all gilt case.



90-137 GSP 213/- doz.
 A silver plated case of great elegance. On the satin smooth silvery background are elegantly depicted gilt leaves and butterfly.



90-716 129/- doz.
 A Florentine effect is achieved on this gilt case in jeweller's high class finish.



90-123 GSP 213/- doz.
 On the smooth satin background of this silver plated cigarette case are arrayed three exquisite flowers in lustrous gilt finish.

Slender oblong cigarette cases for ladies, king size or normal cigarettes. Loose powder compacts in identical shape and designs can be obtained by substituting prefix 190- in place of 90-. Size $3\frac{1}{2}'' \times 2\frac{1}{2}''$. Supplied individually boxed, packed six to an outer.