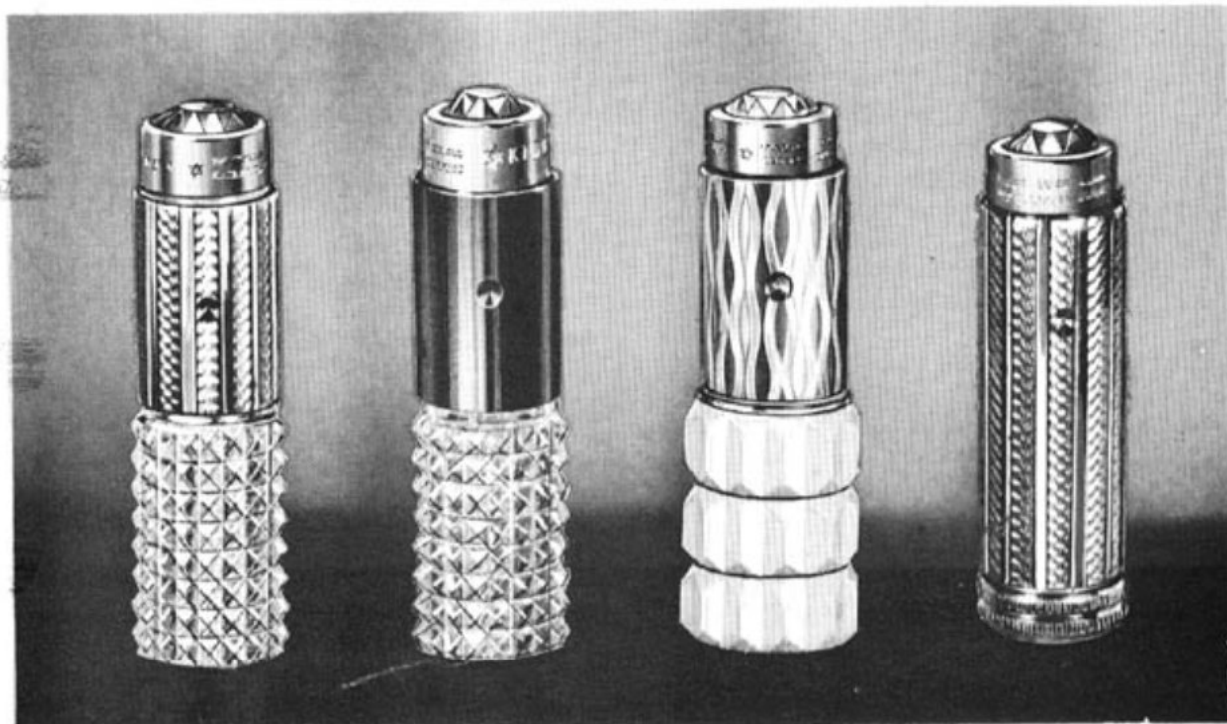


Perfume

KIGU
OF LONDON

Atomisers

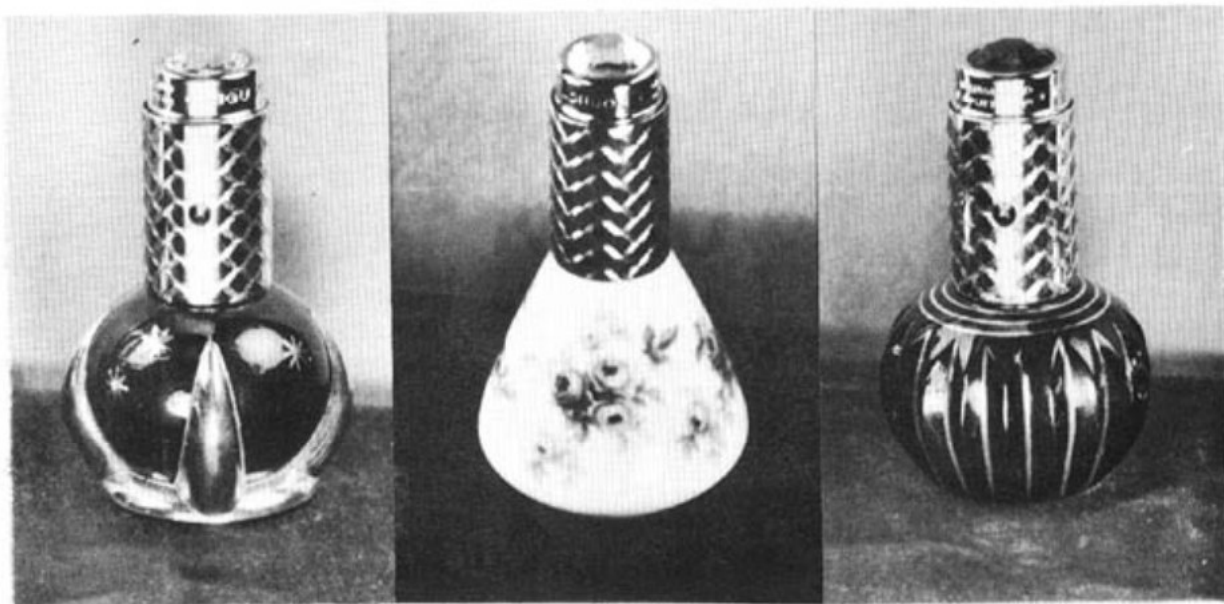


11-ET 117/- doz.
Real engine turning
on gilt metal top.
Six assorted designs.

11-21 117/- doz.
The glass base and
jet black top contrast
most effectively.

11-22W 132/- doz.
White bottle with gilt
decoration and real
engine turned top.

12-ET 165/- doz.
Real hand engine
turning decorates this
gilt metal case.



13-301 270/- doz.
Gilt real hand engine turned
top. Jet black bottle with
gilt decoration.

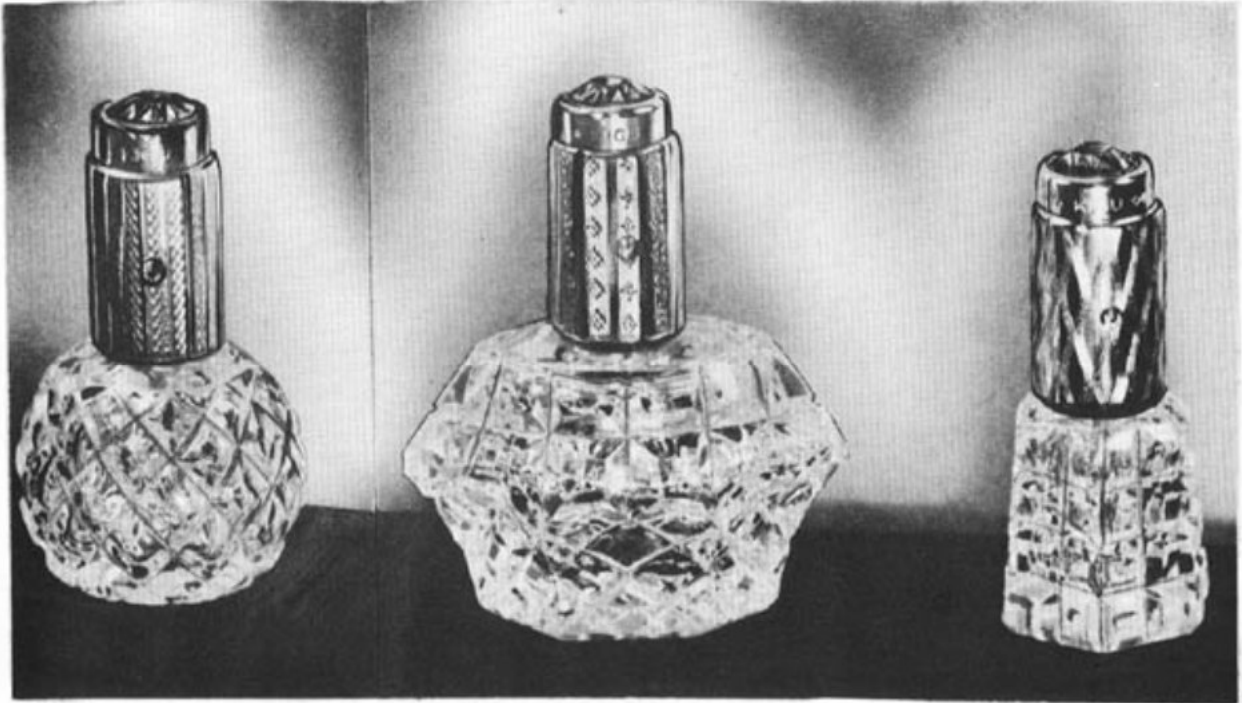
13-201 252/- doz.
Gilt real engine turning
tops the elegant rose
decorated porcelain bottle.

13-302 270/- doz.
Jet black and gilt bottle
with real hand engine turned
top in assorted designs.

Perfume



Atomisers



13-2

210/- doz.

13-26

300/- doz.

13-7

237/- doz.

Lead crystal bottle and real hand engine turned gilt spray top (Kigu patent).



13-402

450/- doz.

13-403

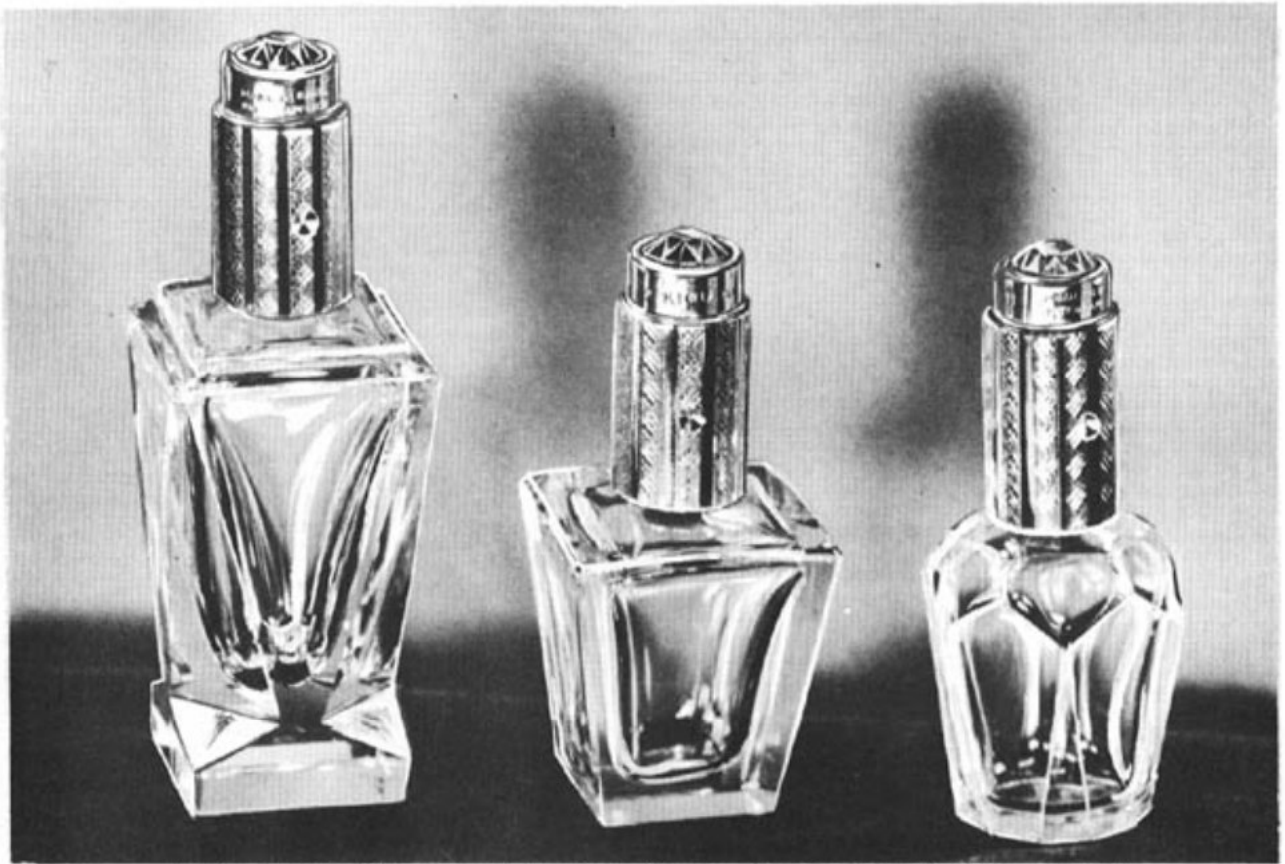
450/- doz.

Superior cut crystal bottles in rainbow hues.

Perfume

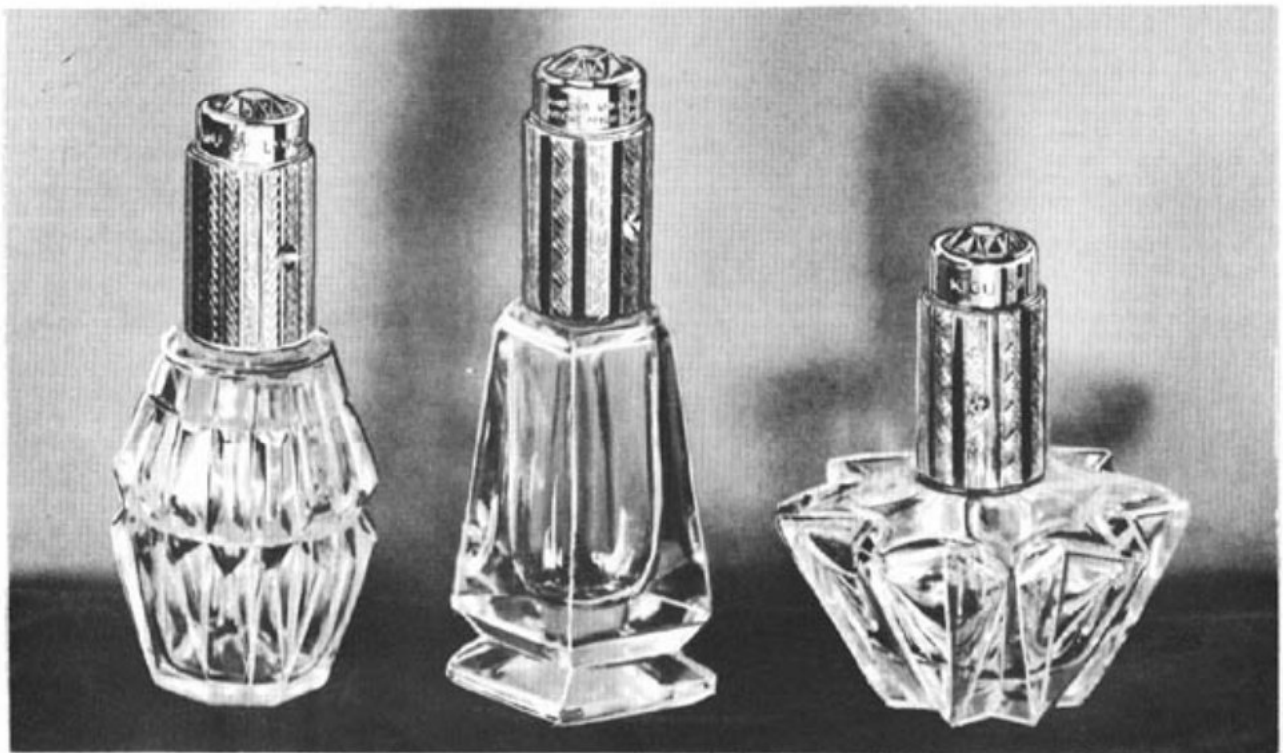
KIGU
OF LONDON

Atomisers



Lead crystal bottle and real hand engine turned gilt spray top (Kigu patent).

13-28 390/- doz. 13-29 324/- doz. 13-32 252/- doz.



13-30 270/- doz. 13-31 294/- doz. 13-33 324/- doz.

Lead crystal bottle and real hand engine turned gilt spray top (Kigu patent).

Perfume



Atomisers

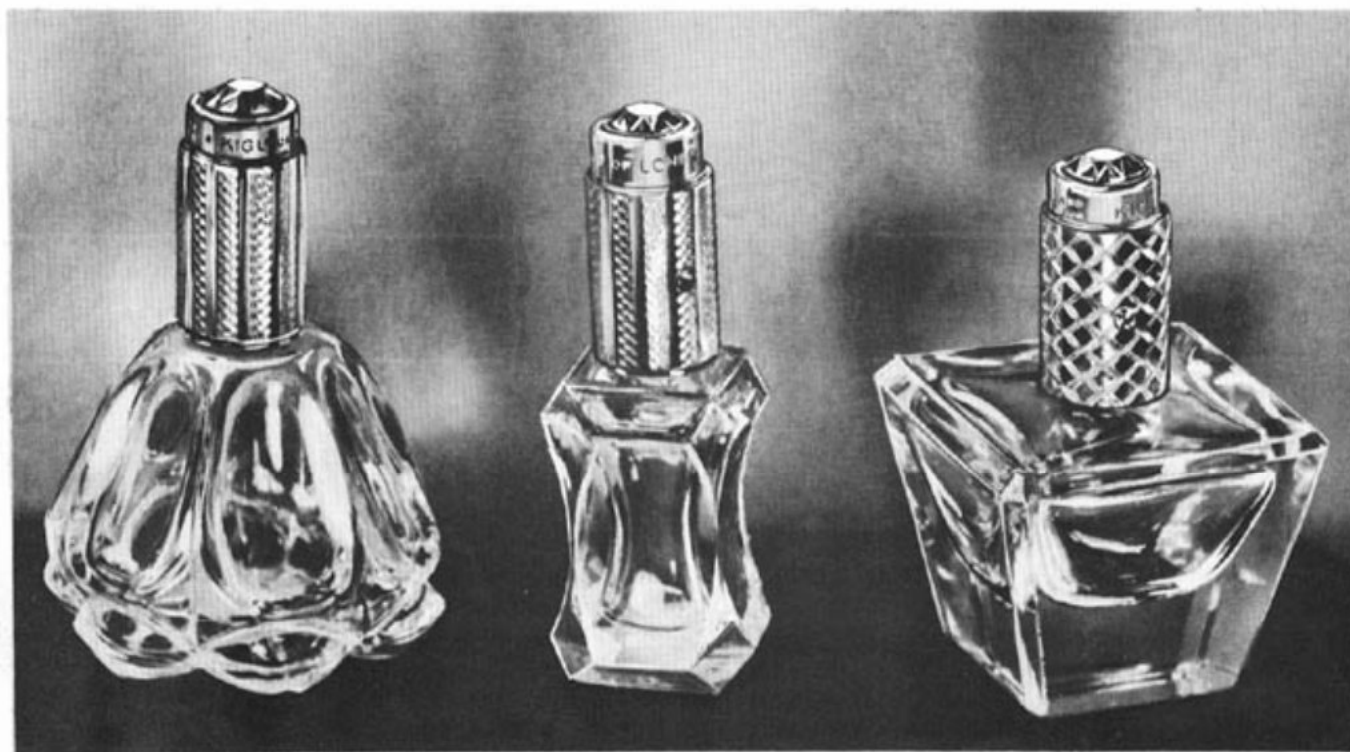


13-20 282/- doz.

13-9 348/- doz.

13-5 336/- doz.

Lead crystal bottle and real hand engine turned gilt spray top (Kigu patent).



13-18 237/- doz.

13-15 282/- doz.

13-23 372/- doz.

Lead crystal bottle and real hand engine turned gilt spray top (Kigu patent).