

Photoframe



Atomisers

41-0M or 41-MM



13-10



12-DC



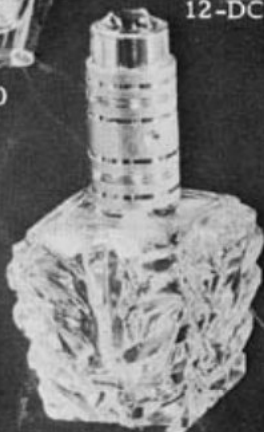
13-5



13-26



13-33



13-3



13-18



13-9



13-41



13-16



11-DC SP



11-DC



12-26 DC



11-DC



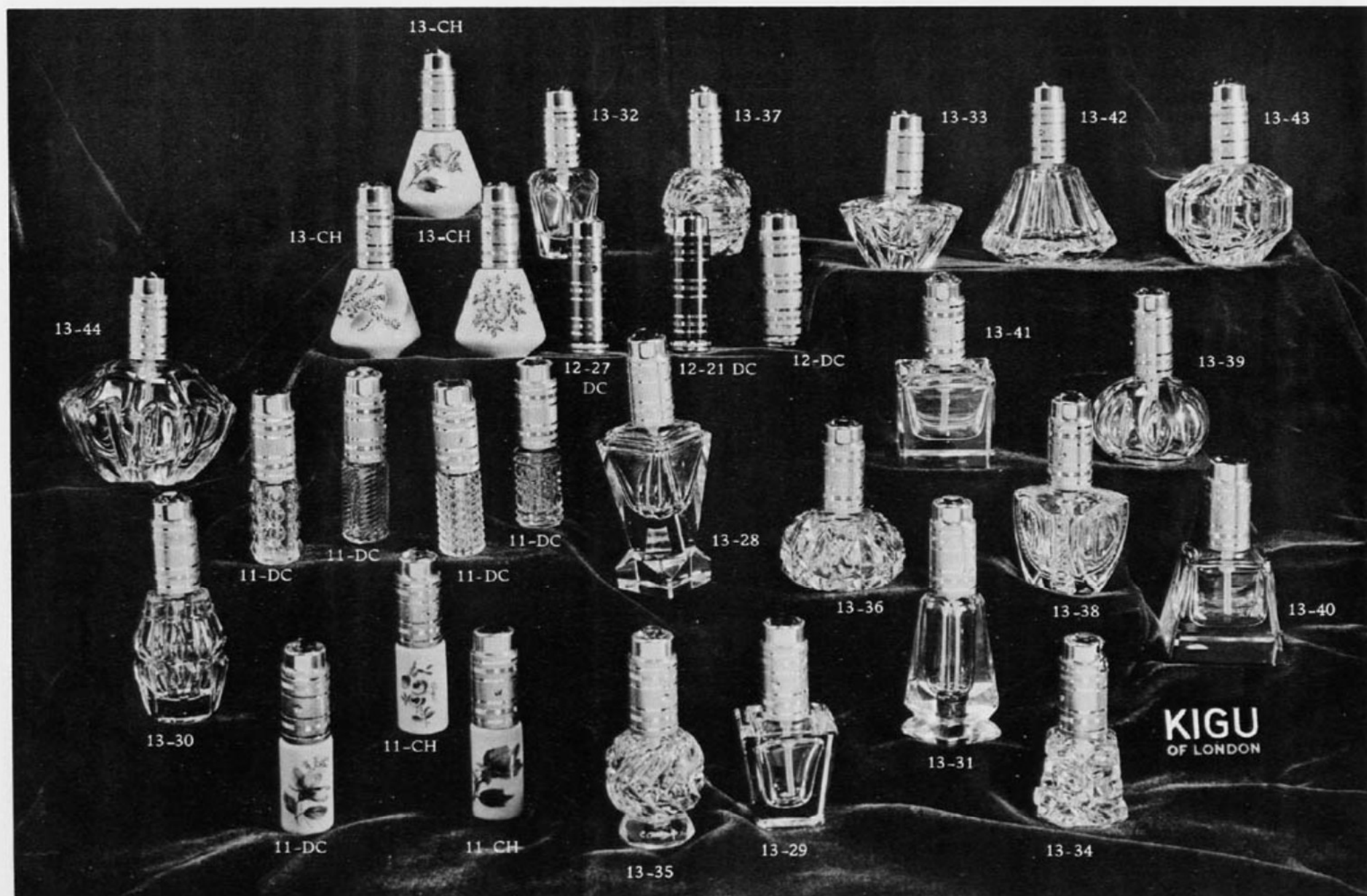
11-DC SP

KIGU  
OF LONDON

# Atomisers



# Atomisers





619-85  
Top quality mother of pearl  
decorates this gilt compact.



619-142  
Engine turned pattern in fine  
bark design and barleycorn  
in jeweller's gilt finish.

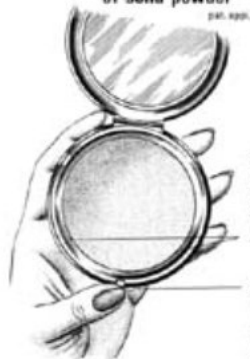


619-192  
Engine turned design, giving  
moirée effect, in jeweller's  
gilt finish.



619-707  
Fine silk pattern engine turned  
with highlights and bright  
surround, all gilt.

#### KIGU INSTANT RELEASE of solid powder

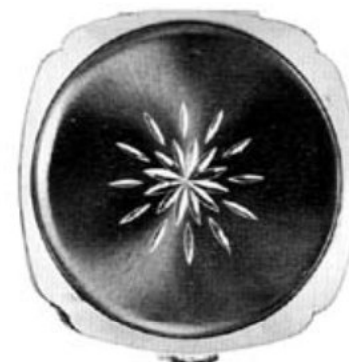


SPRING MOUNTED  
LUGS HOLD SOLID  
POWDER SECURELY  
IN COMPACT

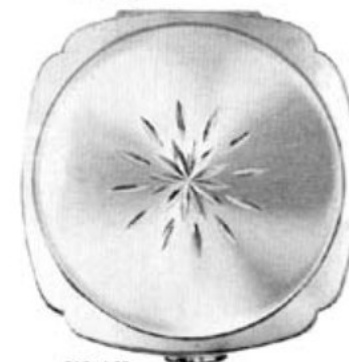
SIMPLY PRESS  
THE CATCH AND  
THE LUGS RETRACT  
RELEASING SOLID  
POWDER



619-190  
Classical engine turned pattern  
in jeweller's gilt finish.



619-160 Black or Blue  
Hand diamond cut star on blue  
or black enamel and gilt  
surround.



619-160  
Hand diamond cut design on brush  
finish background in jeweller's  
gilt finish.



619-21 MJ/186  
Black enamel decorated with  
intricate gilt jewel mount set  
with stones.



619-08  
Highly polished rim surrounds the  
engraved design, all gilt compact.



619-196  
Engine turned design in barleycorn  
with initial panel, all gilt compact.

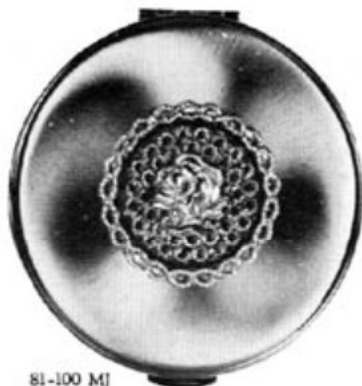


619-T698 Blue  
Graceful design of swans on  
translucent blue enamel  
background.



619T673 SP  
Silver plated compact with  
beautifully shaded design of  
roses.





81-100 MJ

Gold plated jewel mount, filigree and rose design, mounted on elegant brush finish in gilt.



81-140 GSP

Delicate scroll design in gilt on silver plated satin background.



81-01 MJ

The delicate barley corn engine turned pattern in gilt adorned with a graceful rhodium plated jewel mount.



81-201 GSP

Very dainty floral design in gilt on silver plated satin background.



81-209 GSP

Birds of paradise in gilt decorate this silver plated compact.



81-203 GSP

Central design of gilt rose and flowers on smooth silver plated satin background.



81-181

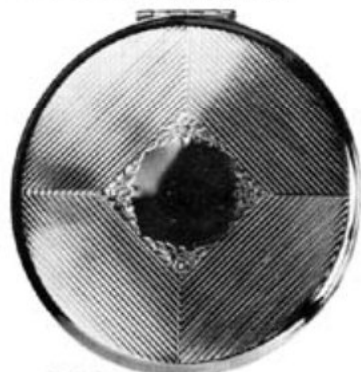
Oblong initial panel highlights the fine engine turned pattern of this all gilt compact.

### KIGU INSTANT RELEASE of solid powder



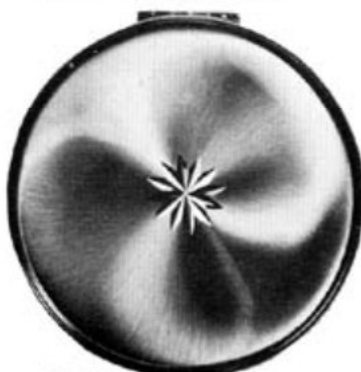
SPRING MOUNTED  
LUGS HOLD SOLID  
POWDER SECURELY  
IN COMPACT

SIMPLY PRESS  
THE CATCH AND  
THE LUGS RETRACT  
RELEASING SOLID  
POWDER



81-182

Unusual engine turned pattern formed by lines and engraved design round initial panel in all gilt.



81-150

Diamond cut star in gilt on brushed finish background.



81-153 X

Diamond cut compact in gilt with interchangeable initial mount.



81-161 blue

The deep translucent blue enamel top is decorated most effectively with a bold diamond cut design in gilt.



81-170 Blue

Real hand engraving in gilt on translucent blue enamel background.



81-1MJ

Delicate brush finish in gilt adorned by an intricate gilt jewel mount set with shaded topaz stones.

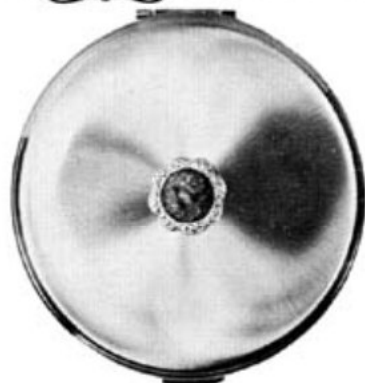


81-73/164

Diamond cut design on silky brushed gilt forms the frame for the slim photo locket.



81-166  
Intricate hand cut diamond pattern on brushed gilt background. Also silver plated brush finish 81-166 SP.



81-100 M Jade 144  
Spun gold design highlighted by the imitation jade stone and jewelled mount.



81-21 E2  
Real enamel plaque with rose design in jewelled frame mounted on black enamel background.



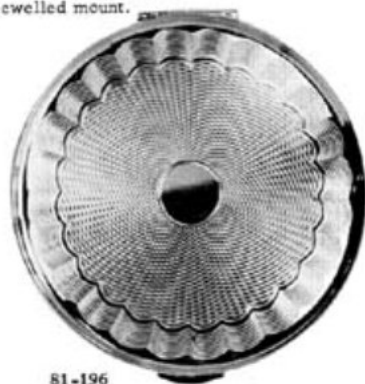
81-21 MJ/186  
Gilt jewel mount set with crystal stones mounted on jet black enamel background.



81-26 E2  
Real enamel plaque in jewelled surround mounted on translucent blue enamel.



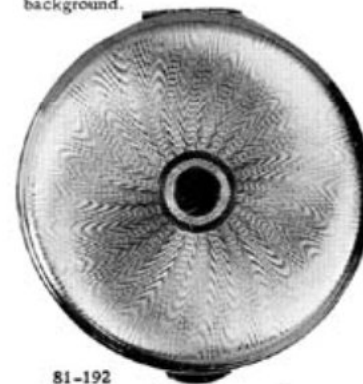
81-195  
A variety of engine turned designs combine effectively on this all gilt compact.



81-196  
All gilt compact with fine engine turned pattern and scalloped effect on border.



81-197  
Glittering triangular segments and delicate engine turned patterns on all gilt compact.



81-192  
Gleaming gilt engine turned pattern, moiré effect and initial panel.



81-193  
Intricate engine turned design with initial panel, all gilt.



81-194  
Draft board design of bright and matt gilt squares and initial panel.



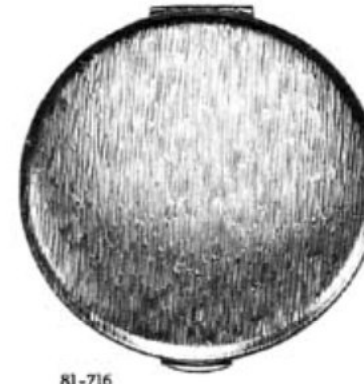
81-191  
Engine turned pattern of fine lines and overcheck on all gilt compact.



81-183  
Chequer board design in engine turned pattern, all gilt compact.



81-707  
Delicate engine turned design in all gilt, shantung effect.



81-716  
Florentine engine turned pattern in all gilt jeweller's finish.



81-30 Black I

Petit point embroidery, rose design, in vivid colouring on black silk.



81-211 GSP

Design of roses in gilt on silver plated satin background.



81-219 GSP

Graceful ballet couple in gilt on silver plated satin background.



81-210 GSP

Modern scroll design in gilt on silver plated satin background.



81-21 MJ

Jet black enamel decorated with graceful gilt jewel mount.



81-EMB/1 Grey

Indian hand embroidery on pearl grey silk. Protected by clear cover against damage.



81-CH15

Delicately shaded pink rose on china plaque surrounded by gilt E.T. frame.



81-32

Delicate shades of green and jade combine effectively in this all over jade colouring.



81-Cnyx

Highly polished real onyx plaque in gilt surround.



81-23

Shades of blue combine to give effect of lapis lazuli.



81-T656 White

Delicate design of colourful roses and blue pattern on white.



81-T636 Black

Roses in true-to-life colouring on black enamel background.



81-T683 Azure

Ivy leaf design in delicate colouring on azure blue background.



81-T636 White

Roses in true-to-life colouring on white enamel background.



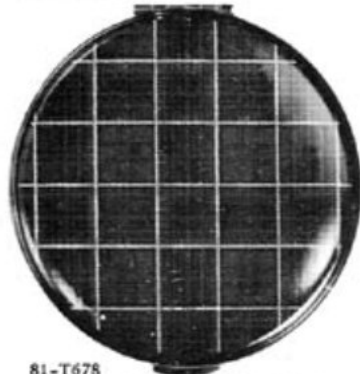
81-T684 Blue

Arum lilies in white and pink on translucent blue background.

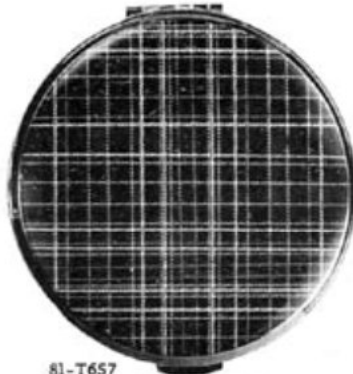




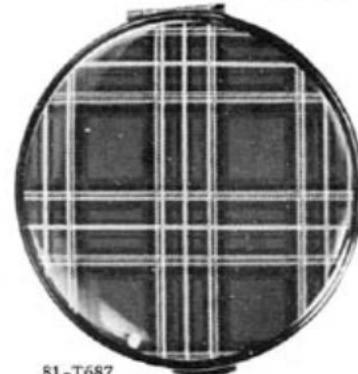
**81-31**  
Warm shades of brown mingle to create pleasing effect of tortoise shell enamel.



**81-T678**  
Reproduction of the Andersen tartan design in muted colourings.



**81-T657**  
Lively tartan design, mainly in red colouring, with narrow gilt border.



**81-T687**  
Royal Stewart tartan design in vivid colouring.



**81-31 Mj**  
Tortoiseshell enamel background decorated with a gilt mounted jewel.



**81-T615**  
Delicately shaded flowers on gilt satin background.



**81-T672**  
Dahlias decorate the smooth satin background of this gilt compact.



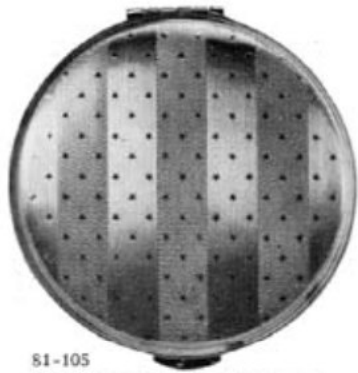
**81-T603 SP**  
Delicately designed pink roses on silver plated satin background.



**81-T673 SP**  
Beautifully drawn and coloured roses on silver plated background.



**81-T383 Blue**  
Red roses and leaves on translucent blue enamel background.



**81-105**  
Alternating bands of engine turned design, dotted with raised stars in all gilt combine in a most successful design.



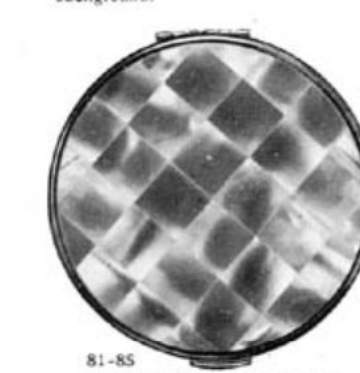
**81-212**  
The bright gold of the floral design contrasts with the matt gilt background.



**81-123 Black**  
Three highly polished orchids contrast effectively with the jet black enamel background.



**81-357 blue**  
The deep translucent background and the nesting swans make this a very attractive gilt compact.



**81-85**  
The iridescent charm of real mother of pearl beautifies this gilt convertible compact.



615-EMB Grey

Indian hand embroidery in gold thread on grey silk.



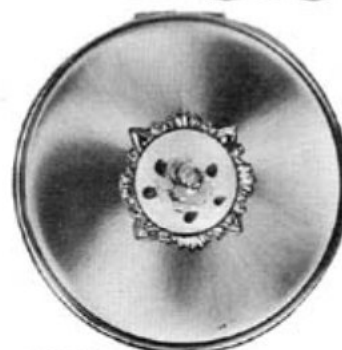
615-EMB White

Indian hand embroidery in gold on off white silk.



615-100/6

Gilt compact in brush finish with black and gold oval motif. Available in three assorted designs.



615-100 E5

Rose plaque in real enamel set in gilt frame decorates the matt brush finish gilt background.



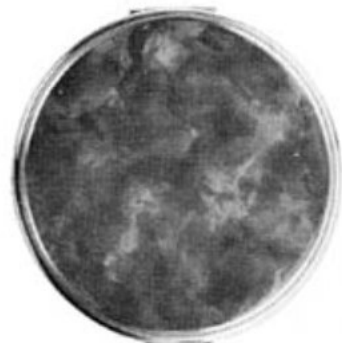
615-26 E2

Translucent blue enamel background decorated with rose enamel plaque.



615-85

The translucent beauty of this real mother of pearl decorates this gilt convertible compact in high class jeweller's finish.



615-32

Shades of green combine in the jade enamel finish.



615-23

Lapis lazuli effect beautifully achieved through shading of blues on this enamelled top.



615-T677

Modern design in bright and intense colourings surrounded by gilt rim.



615-T656

Colourful design from an antique bonbonniere on white enamel background.



615-T328

Multi coloured design of Kingfishers and blossom on gilt satin background.



615-T685

Colourful floral design on translucent blue background.



615-T616

Smooth satin finish in gilt forms the background for bold white and pink flowers and leaves.



615-T336

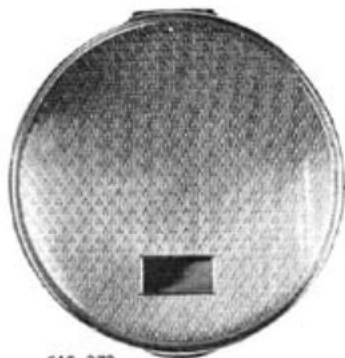
Arrangement of delicately coloured roses on gilt satin background.



615-T683 Azure

Design of ivy leaves on azure blue background.





**615-272**  
Classical engine turned pattern with oblong initial panel in jeweller's gilt finish.



**615-115**  
Alternate bands of fine lines and barley engine turned design in gilt finish.



**615-273**  
A variety of engine turned designs and oblong initial panel decorate this all gilt compact.



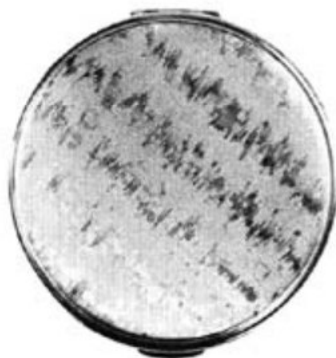
**615-269**  
Fine engine turned design with border giving scalloped effect, all gilt finish.



**615-08**  
Intricate scroll design surrounds the engine turned pattern in jeweller's gilt finish.



**615-142**  
Most elegant florentine finish decorated with a bright and an E.T. band in jeweller's gilt finish.



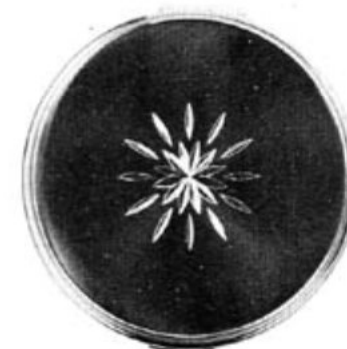
**615-707**  
Delicate engine turned pattern with bright gilt highlights.



**615-113**  
An attractive engine turned design of diamonds within diamonds giving a pleasing effect on this all gilt compact in jeweller's finish.



**615-151**  
Multi pointed star surrounded by a catherine wheel of diamond cuts on a brush satin finish in gilt.



**615-160 Blue**  
Elaborate gilt diamond cut star on translucent blue background.



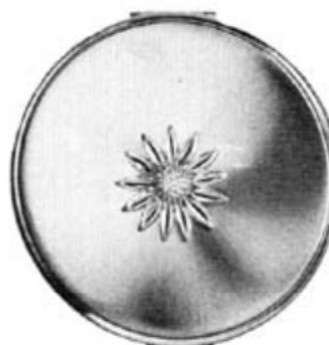
**615-221 GSP**  
Wild ducks in flight, gilt design on silver plated satin background.



**615-127 GSP**  
The attractive silver plated engine turned design forms a pleasing background for the gilt spray of leaves.



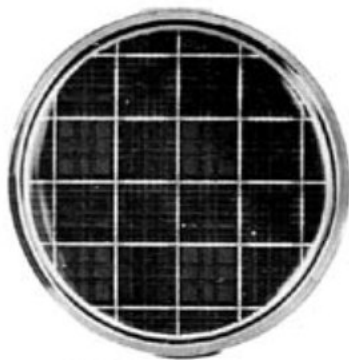
**615-202 GSP**  
Roses in gilt scattered on silver plated satin background.



**615-100 MJ/139**  
All gilt compact with brushed finish top decorated with gilt jewel mount.

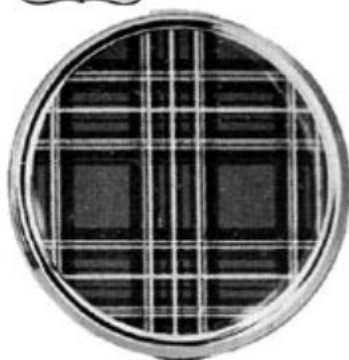


**619-100 MJ/185**  
Intricate gilt jewel mount set with crystal stones on brushed gilt background.



17-T678

Reproduction of Anderson tartan in muted colouring.



17-T687

Royal Stewart tartan in predominantly red colouring.



17-T688

Coloured design of dancing couples on gilt satin background.



17-549 Blue

Graceful swans and cygnets adorn the translucent blue background.



17-T689

Modern design in tones of gold on gilt satin background.



17-T383 White

Red roses on white enamel background surrounded by rim in bright gilt.



17-T652

Deep scarlet roses and lilies of the valley in life like reproduction on gilt satin background.



17-T385

Attractive spray of colourful roses on silky satin background.



Unit 17-Cobalt

Gold and white roses and other flowers on deep translucent cobalt blue background. Assortment of six designs per unit.



Unit 17-Cobalt

Gold and white orchids and other flowers on deep translucent cobalt blue background. Assortment of six designs per unit.



17-T644

Delicately shaded flower group on gilt satin background.



17-T308 Black

Rose design in bright colouring on black enamel background.



17-30 White IV

Vivid design of roses in petit point embroidery on cream silk.



17-30 Black III

Bunch of roses in petit point embroidery on black silk background.



17-30 Black II

Central rose design in petit point embroidery on black silk.



17-605

Delicate engine turned pattern in jeweller's gilt finish.



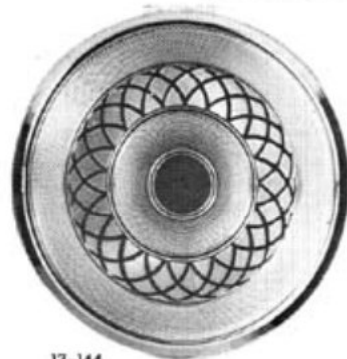
17-20

An attractive all gilt convertible compact with Tudor roses scattered on a fine silk background.



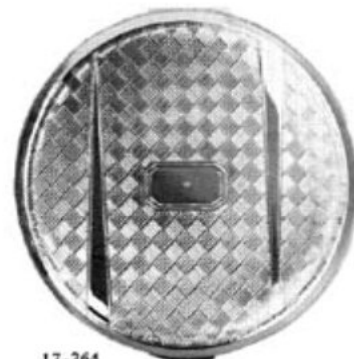
17-261

Ray effect contrasting successfully with fine engine turned pattern, all gilt.



17-144

Two rings in fine engine turned barley pattern contrast effectively with a circle of bold engine turning.



17-264

Engine turned pattern, woven effect, and oblong initial panel. All gilt.



17-762 Swan

Graceful design of swan decorates perspex insert, surrounded by gilt frame.



17-762 D

Perspex insert depicting white daisies on black background.



17-762 H

Pink and red flowers decorate perspex insert in gilt compact.



17-73 DC

Photo locket decorated with diamond cut star on gilt convertible compact.



17-103 MJ

Fine engine turned design in gilt forms the background for the delicate gilt bow jewel mount.



17-10 CAM White

The cameo style insert in black and white surrounded by a glittering gilt frame set in matt satin finish.



17-83

The charm of real mother of pearl on this gilt convertible compact delights the heart.



17-85

Highest quality real mother of pearl surrounded by gilt frame.



17-122

Design of lilies of the valley in bright gilt on matt gilt background.



17-21 MJ

Jet black enamel highlighted by rhodium plated tudor rose shaped jewel mount.





for the YOUNG



Display Box containing 6 MINI COMPACTS as listed below:-

- |              |   |
|--------------|---|
| 149-23       | Lapis enamel finish.                          |
| 149-26 E     | Blue enamel with mount.                       |
| 149-31       | Tortoiseshell enamel finish.                  |
| 149-150 blue | Diamond cut star on blue enamel.              |
| 149-100 MJ   | Intricate jewelled mount with crystal stones. |
| 149-85       | Real mother of pearl.                         |



UNIT 149-ET  
6 Assorted engine turned designs in all gilt finish. Supplied with puff and sifter.



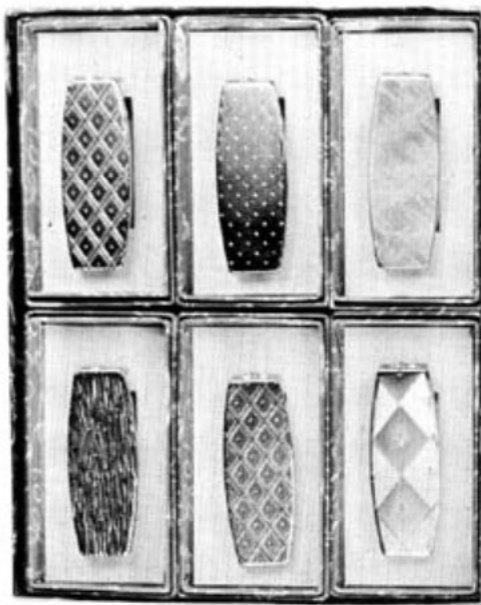
Unit 46-Orchid  
Design of orchid and cigarette on black, blue and white background.



UNIT 40-Col.  
Mirror with filigree handle, backed with assorted coloured designs.

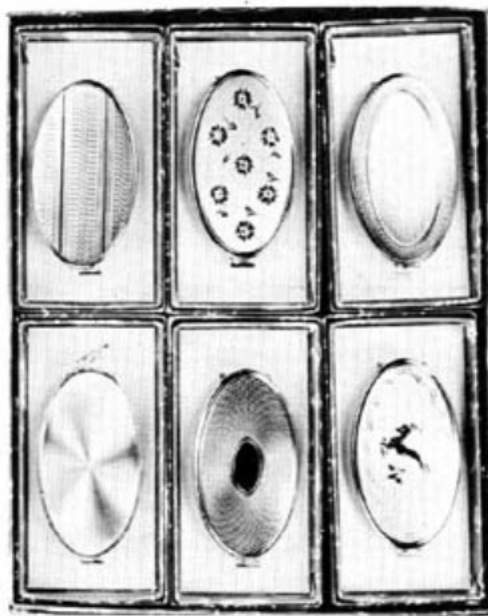


UNIT 40-ET  
Mirror with filigree handle, backed with assorted engine turned designs in jeweller's gilt finish.



UNIT 556-ET

Slim lip mirrors. Six assorted engine turned designs in jeweller's gilt finish.



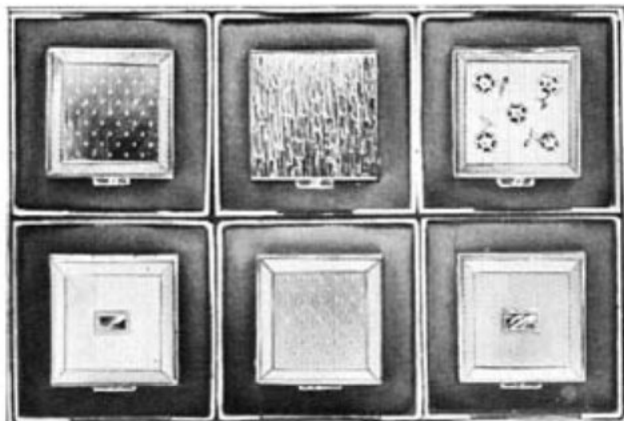
UNIT 555-ET

Clipette lip mirrors suitable for most lipsticks. Six assorted engine turned designs.



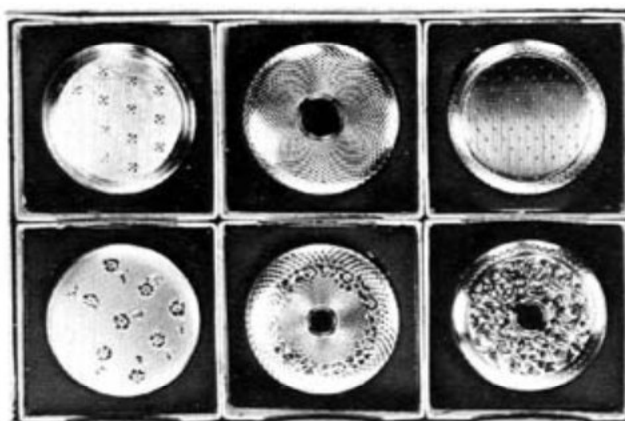
UNIT 555-Col.

Clipette lip mirrors suitable for most lipsticks. Six assorted colourful designs.



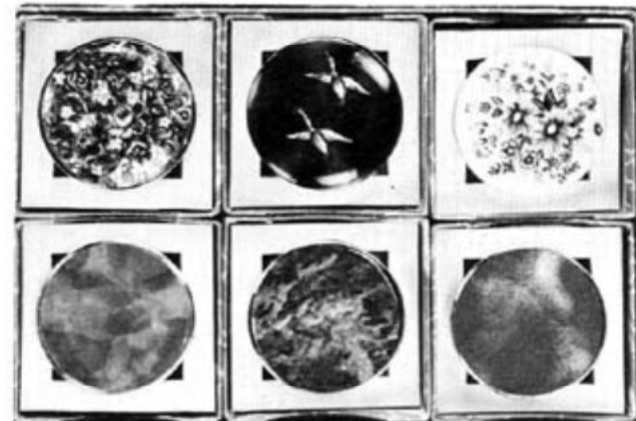
UNIT 48-ET

Pill boxes in assorted gilt engine turned designs. Spring catch and hygienic white interior.



UNIT 50-ET

Pill boxes in assorted gilt engine turned designs. Spring catch and hygienic white interior.



UNIT 50-Col.

Pill boxes in six assorted colourful designs. Spring catch and hygienic white interior.

58

KIGU  
OF LONDON

## Loose Powder

KIGU  
OF LONDON

58



58-130 GSP

A silver plated compact of great elegance with satin background which sets off the pattern of bright gilt bluebells and leaves.



58-10 SP/E1

A heart shaped compact in satin silver plate with centrally mounted oval real enamel rose plaque in jewelled setting.



58-10 SP MJ

Gleaming satin finish with bright rim forms the fitting background for the elegant jewel mount. Slim compact in silver plate finish.



58-08

Intricate engraved design with a fancy shape initial panel.



58-160 White

Diamond cut star in gilt on gleaming white enamel background.

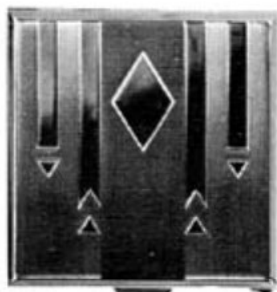
69

KIGU  
OF LONDON

## Loose Powder

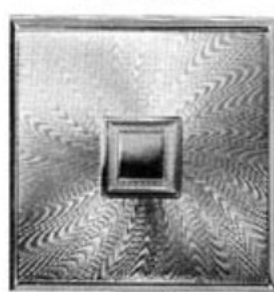
KIGU  
OF LONDON

69



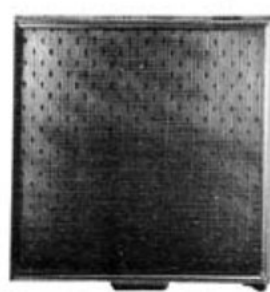
69-270

Fine engine turned pattern with highly polished segments in all gilt.



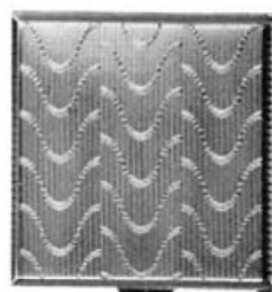
69-192

Engine turned pattern in m'elree finish with square initial panel in all gilt.



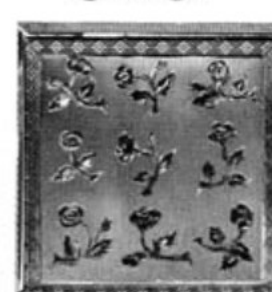
69-605

Fine spot and line engine turned design in jeweller's gilt finish.



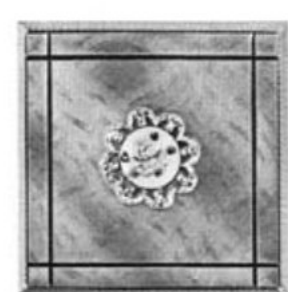
69-271

Engine turned pattern of fine lines and waves in jeweller's gilt finish.



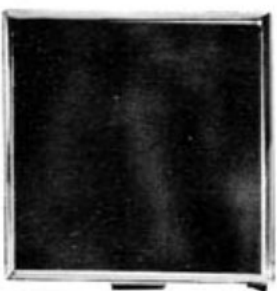
69-220 GSP

Flowers in gilt scattered on silver plated background.



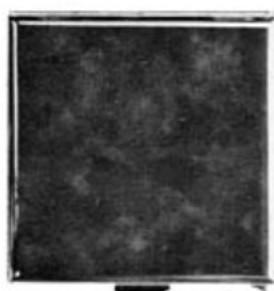
69-127 SP E2

Silver plated compact in silk design with real enamel plaque in frame.



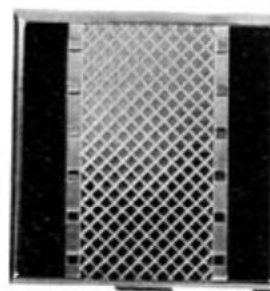
69-31

Tortoiseshell enamel decorates this slim compact highlighted by a narrow gilt frame.



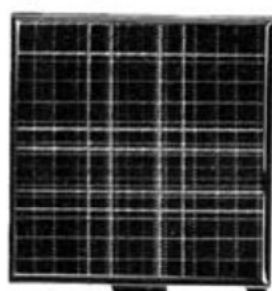
69-32

Shades of green combine to give effect of jade stone.



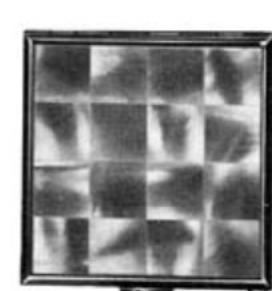
69-148 Black

Gilt engine turned design enclosed by two black enamel segments.



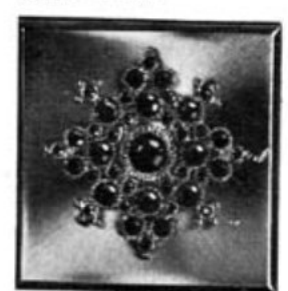
69-T657

Lively tartan design surrounded by narrow gilt frame.



69-85

Real mother of pearl in gilt frame.



69-LMJ

Elegant gilt brush finish adorned by rich jewel mount set with shaded topaz stones.





**51-268**  
Engine turned pattern giving ray effect in jeweller's gilt finish.



**51-100 SP E10**  
Silver plated compact in brush finish with enamel plaque in jewelled frame.



**51-267 MJ**  
Gilt engine turned patterned compact decorated with graceful jewel mount.



**51-716**  
Sophisticated florentine bark design in jeweller's gilt finish.



**51-123 Black**  
Three flowers in highly polished gilt on jet black enamel background.



**51-21 E2**  
Jet black enamel with centrally mounted real enamel rose plaque.



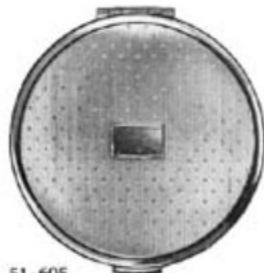
**51-21 MJ/180**  
Elaborate jewel mount in gilt set with stones on black enamel background.



**51-23**  
Shades of blue combine giving appearance of lapis lazuli.



**51-12**  
Classical engine turned pattern in jeweller's gilt finish.



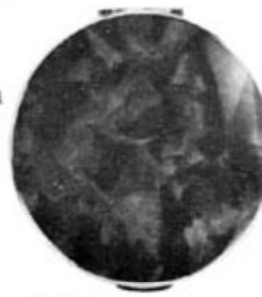
**51-605**  
Classic engine turned spot and line design with central initial panel.



**51-106 GSP**  
Exquisite rose pattern in gilt against background of satin smooth silver plate.



**51-196**  
Engine turned design with initial panel in jeweller's gilt finish.



**51-32**  
Delicate shades of green and jade in enamelled finish.



**51-T618 Blue**  
Charming design of water lilies on translucent blue.



**51-T242 White**  
Delicately shaded violets on white enamel background.



**51-T683 Azure**  
Delicate design of ivy leaves on blue enamelled background.



**51-T602 White**  
Delicate colourful design on white enamel background.



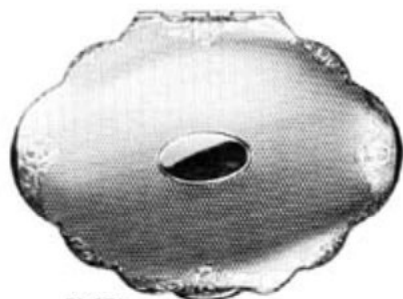
**51-T656**  
Colourful design reproduced from antique bonbonniere on white background.



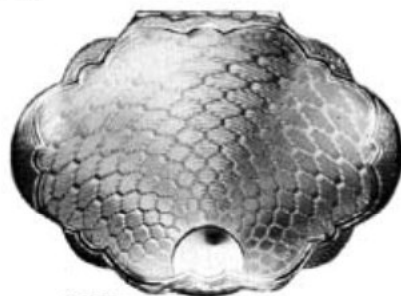
**51-85**  
Real inlaid mother of pearl has luminous beauty and natural opalescent quality.



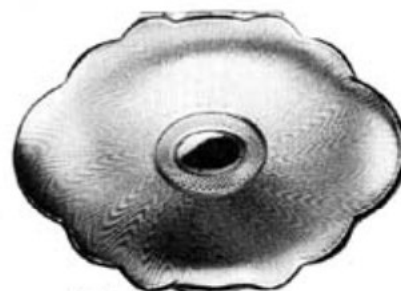
**51-T686**  
Design in pastel colours and gilt on white enamel background.



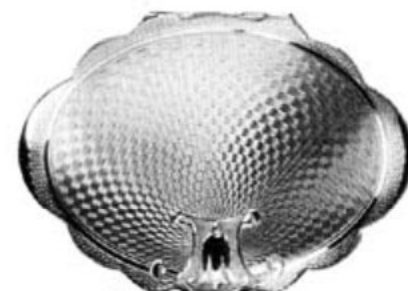
78-276  
Classical engine turned pattern  
with floral border in all gilt.



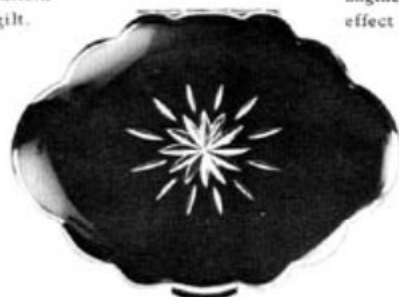
78-266  
Engine turned design in honeycomb  
effect in jeweller's gilt finish.



78-192  
Engine turned pattern in moiré  
effect in jeweller's gilt finish.



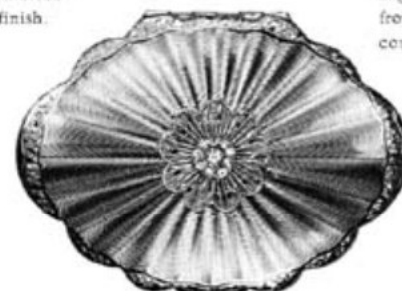
78-274  
Engine turned design radiating  
from fancy panel on all gilt  
compact.



78-160 Black  
Intricate diamond cut star in gilt  
on jet black enamel.



78-21 E1  
Real enamel plaque in jewelled  
frame on black enamel background.



78-275 MJ  
Sunray effect engine turned  
design with delicate central  
jewel mount.



78-T684 Blue  
Translucent blue enamel  
background decorated with  
multi coloured orchid design.



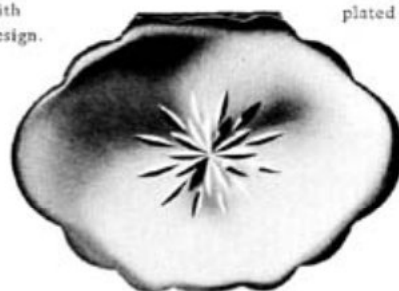
78-T673 SP  
Colourful design of roses on silver  
plated satin background.



78-T602 White  
Delicate floral design surrounded by  
blue and gold scroll decoration on  
white enamel.



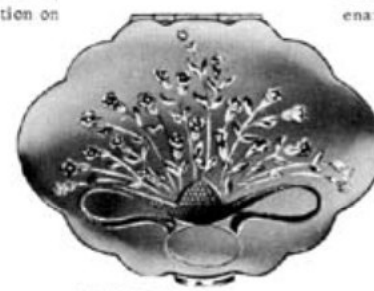
78-123 Black  
Gleaming gilt flowers on jet black  
enamel background.



78-160 SP  
Gilt diamond cut star design on  
silver plated satin background.



This illustration shows the side view of our  
78 Series of compacts. Note the extreme  
slimness of construction, which is patented.



78-128 CSP  
Two tone design in gilt on silver  
plated satin background.



73-26 MJ 107

Translucent blue enamel background decorated with glittering jewel mount



73-274

Engine turned pattern in basket weave in jeweller's gilt finish.



73-262

Engine turned design radiating from central initial panel. All gilt.



77-60S SP E1

Silver plated musical compact decorated with real enamel rose ornament.



77-106 GSP

Floral design in gilt on silver plated satin background.



73-T361 Blue

Delicate spray of pink roses on translucent blue enamel background.



73-T618 Blue

Design of water lilies on translucent blue enamel.



73-160 Blue or Black

Hand diamond cut star in gilt on blue or black enamel background.



77-160 also 77-160 SP

Hand diamond cut star on gilt or silver plated musical compact.



77-126

Two tone gilt effect achieved by flowers in bright gilt on satin background.



73-100 MJ 141

Brushed finish top of gilt musical compact decorated with gilt jewel mount



73-10 SP MJ

Silver plated musical compact decorated with elaborate jewel mount.



73-T673 SP

Delicate design of roses on silver plated musical compact.



77-21 MJ

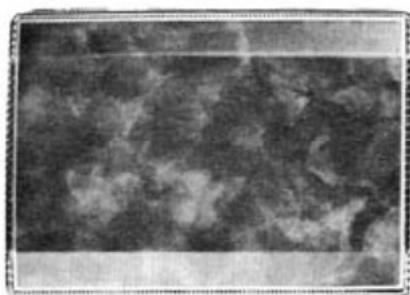
Filigree jewel mount in gilt decorates the jet black enamel top of gilt musical.



77-85

Real mother of pearl plate of first quality decorates this gilt musical.



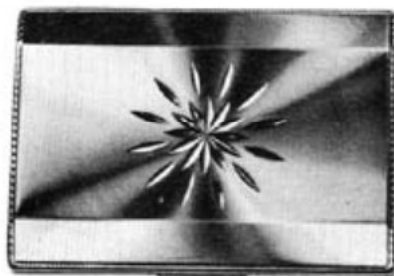


Enamelled finishes in three colourings:-

91-23 Shades of blue.

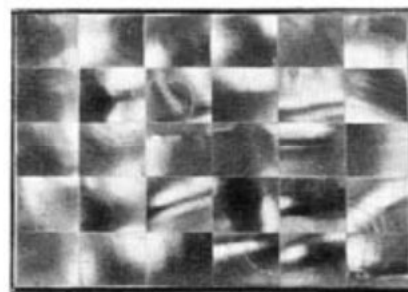
91-31 Shades of tortoiseshell.

91-32 Shades of jade and green.



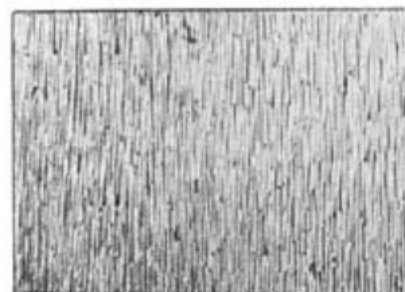
91-160

Diamond cut design glitters on matt brush finished gilt background.



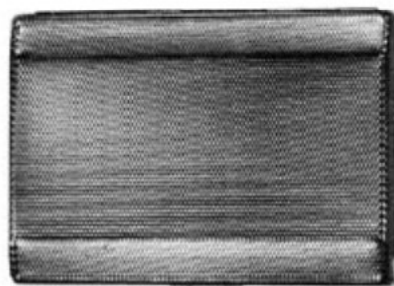
90-85

Real inlaid mother of pearl has the rich, luminous beauty to delight those seeking perfection.



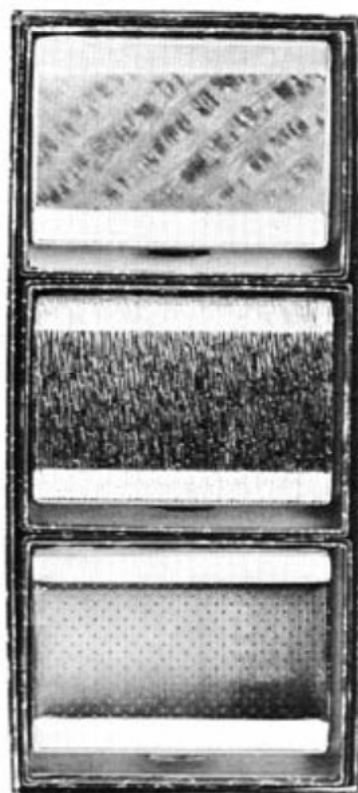
90-716

A florentine effect is achieved on this gilt case in jeweller's high class finish.



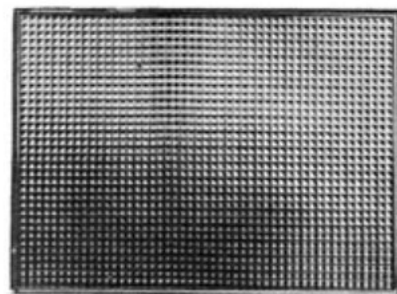
91-01

Fine barleycorn engine turned design in all gilt.



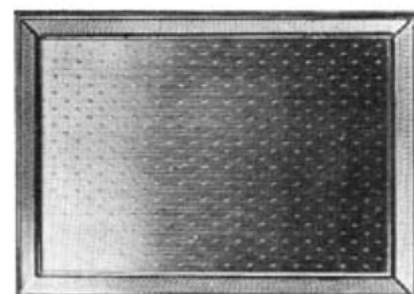
91-707

Delicate engine turned pattern giving silk effect in all gilt.



90-06

A highly polished all gilt case in hobnail engine turned pattern. An elegant classical design.



90-605

A fine engine turned barley pattern borders the delicate spot and line design of this all gilt case.



91-T357 blue

Groups of swans and cygnets on translucent blue background.



90-160 Blue

A glittering diamond cut star in gilt embellishes the translucent blue enamel of this cigarette case.



90-T616 blue

Deep translucent blue enamel forms the effective background for dazzling white flowers.



90-EN 1

Glittering jewelled plaque set with stones on fired white enamel. Available in topaz, emerald and rose.



**98-03**  
Delicate barley engine turned  
tem and initial panel on all  
case.



**98-605**  
Spot and line design and barleysur-  
round decorate this gilt case.



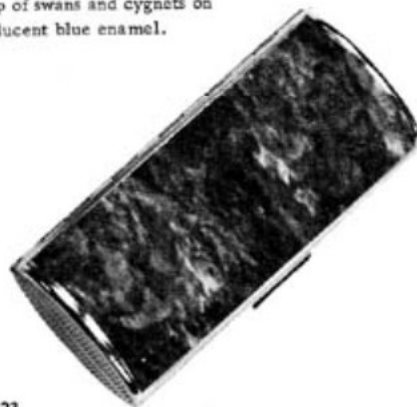
**98-T357 Blue**  
Group of swans and cygnets on  
translucent blue enamel.



**98-717**  
Graceful leaping deer design on gilt  
shantung background.



**98-20**  
Highly polished tudor roses scattered  
on silky gilt background.



**98-23**  
King size cigarette case in shades  
of blue giving appearance of lapis  
lazuli.



**98-716**  
Lustrous florentine pattern in jewel-  
ler's gilt finish embellishes this  
cigarette case.



**98-170 blue**  
Real hand engraving in gilt in floral  
designs on translucent blue enamel.  
Matches various compacts.



**98-32**  
Enamelled finish in various  
shades of green and jade.  
ALSO

**98-31**  
King size cigarette case in  
tortoiseshell enamel finish.



**Unit 98-Col.**  
Cigarette case for king size  
cigarettes. Six coloured designs  
making up assortment.

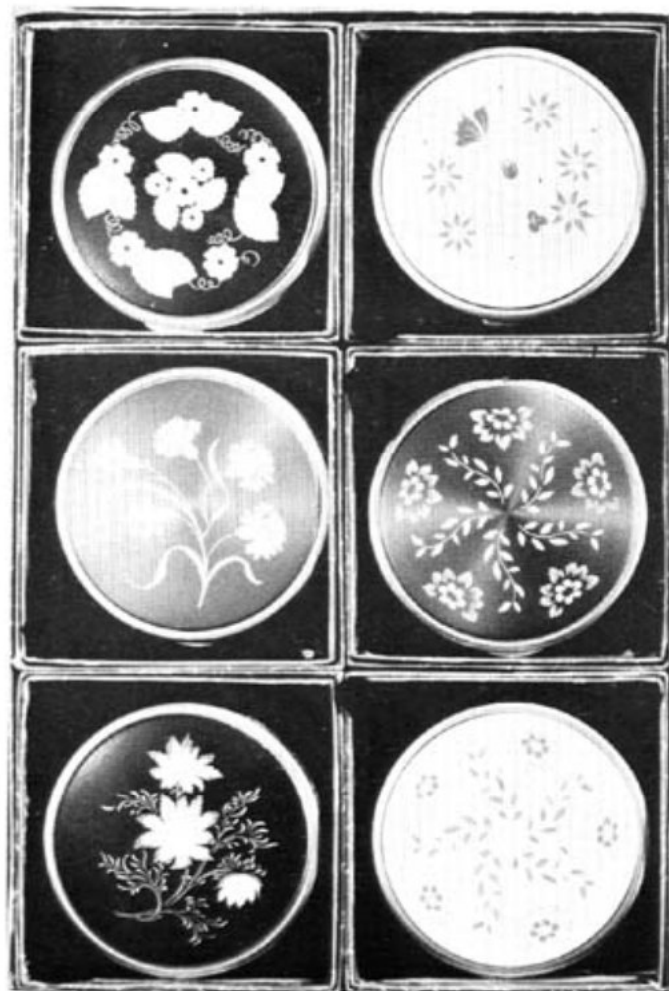


**Unit 98-ET**  
Cigarette case for king size  
cigarettes. Six assorted engine  
turned patterns.

# Units of Six



# Units of Six



**UNIT 266 CT**

Unit of six convertible compacts in assorted designs on blue, black and white enamel backgrounds.



**UNIT 266**

Unit of six convertible compacts with spring catch in assorted floral designs. Complete with puff, sifter and pochette.



**UNIT 266 Cobalt**

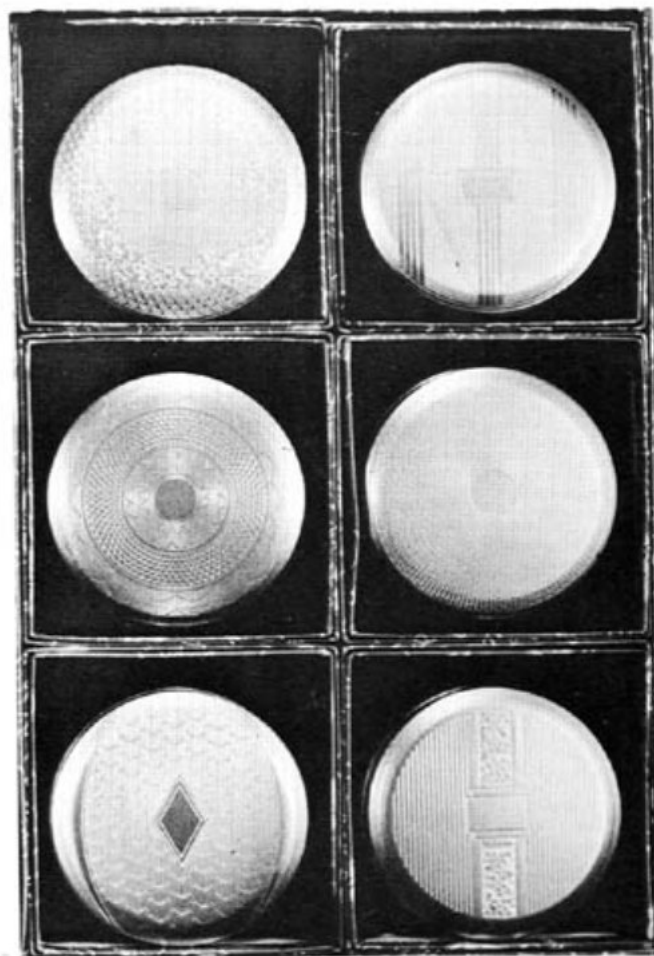
Unit of six convertible compacts. Gilt assorted designs on deep translucent blue enamel.



# Units of Six



# Units of Six



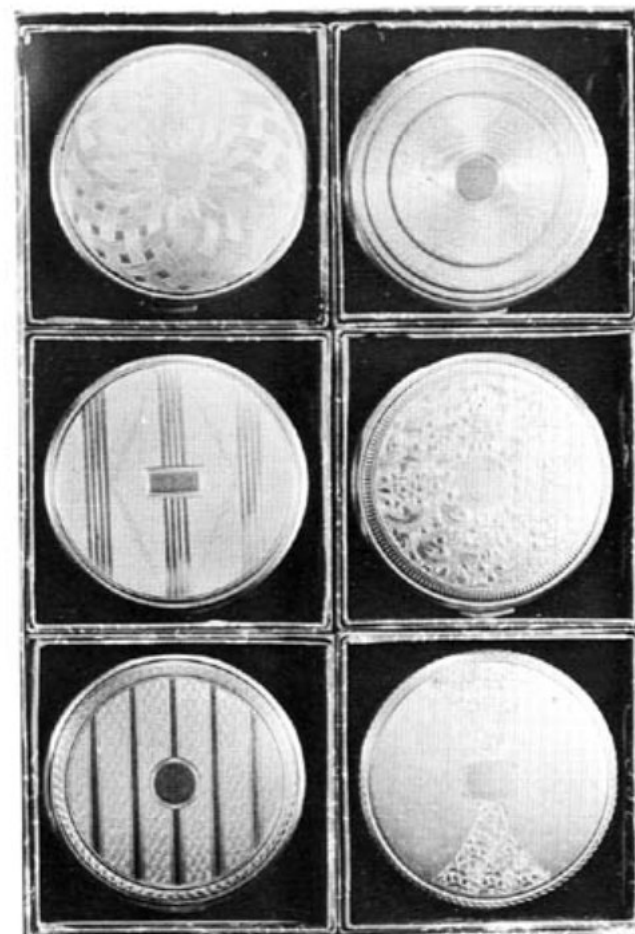
## UNIT 375

Unit of six convertible compacts in gilt, assorted engine turned designs. Supplied with puff, sifter and pochette.



## UNIT 376

Unit of six convertible compacts in a variety of designs. Supplied complete with puff, sifter and pochette.



## UNIT 265

Unit of six convertible compacts with spring catch in gilt. Assorted engine turned patterns.



# Party Cases 121

COMBINATION "PARTY CASE" CONSISTING OF LOOSE POWDER COMPACT, KING SIZE CIGARETTE CASE, LIPSTICK CASE AND PERFUME BOTTLE IN METAL CASE, BLACK CARRYING STRAP.



121-85

121-T604 SP



121-85

Rich luxury of mother of pearl decorates this gilt case.

121-T604 SP

Colourful design of roses on silver plated satin background.



121-100

121-100 MJ/168

Delicate gilt jewel mount on brushed finish case in jeweller's gilt finish.

121-26 E1



121-26 E1

Translucent blue enamel decorated with real enamel rose plaque in frame.



121-100 MJ/168

121-100

Most elegant case in gleaming brush finish, all gilt.



121-160 Blue

121-160 Blue

Intricate diamond cut star in gilt on translucent blue enamel.

# DISPLAY STANDS



"SOLO" Stand  
for one compact only.

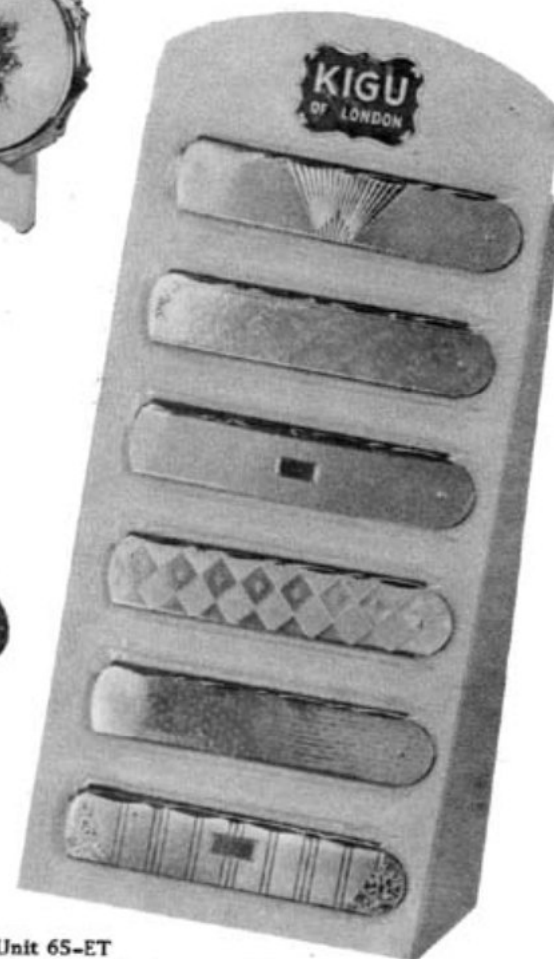


"TRIO" Stand  
for displaying 3 compacts.



"QUINTETTE" Stand  
for displaying 5 compacts.

TRIO OR QUINTETTE STANDS  
AVAILABLE IN RED OR GOLD  
FINISH.



Unit 65-ET  
Six gilt combs in assorted engine  
turned designs, contained in see-  
through plastic pouches, supplied  
as shown on display stand.

**Display Stands are supplied on request**

**WALDO WORKS · WALDO ROAD  
LONDON, N.W.10**