

Compacts of Character
by



KIGU LTD., WALDO WORKS,
Manufacturers of exquisite fancy goods.

WALDO ROAD, LONDON, N.W.10.
Telephone: LADbroke 1042-3. Cables: KIGU LONDON.



KIGU LIMITED

Manufacturers of exquisite fancy goods.



TELEPHONE: LADBROKE 1042 (PTE. BRCH. EXC)



TELEGRAMS: KIGU, HARLES, LONDON
CABLES: KIGU, LONDON

In presenting . . .

this brochure we wish to introduce to you a new conception of quality and design in Powder Compacts. KIGU fancy goods are the products of the joint efforts of creative artists and highly skilled craftsmen. They fashioned the rich, enduring beauty and detailed excellence which characterises the attractive range of products shown on the following pages.

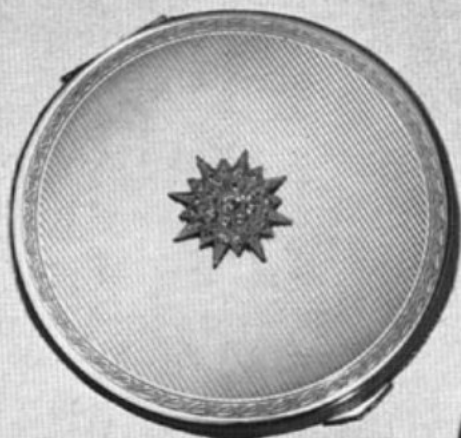
The management of this firm has the experience of over a quarter of a century in the production of high-class Metal Powder Compacts and our new factory which incorporates the most advanced manufacturing methods and precision equipment, makes available technical resources second to none.

We have endeavoured to meet the challenge of prevailing fashion which demands a different Compact to match the mood, costume and occasion, and we hope you will feature our products for an immediate stimulus to sales and for the long-term profitable policy of identifying your name with products of proven quality.

KIGU LTD.

Waldo Works, Waldo Road,
London, N.W.10

Compacts of Character by **KIGU**



170



202



203



- | | | Size | Weight |
|----------|--|----------------------------|-------------------------|
| 203 M.J. | Black enamelled top with marcasite Jewellery. | 3 1/2" dia.
90 mm. dia. | 4 1/2 ozs.
135 grms. |
| 202 M.J. | Black enamelled top with marcasite Jewellery. | 3" dia.
75 mm. dia. | 3 1/2 ozs.
100 grms. |
| 170 M.J. | Engine Turned Line design with floral border, highly polished all gilt finish, with marcasite Jewellery. | 3 1/2" dia.
90 mm. dia. | 4 1/2 ozs.
135 grms. |

All these Compacts are dome shaped, have Engine Turned reverse sides, fluted edges and Engine Turned pattern spill-proof Inner Lids and incorporate patented features.

- | | Size | Weight |
|--|-------------|------------|
| 166. Engine Turned design, highly polished gilt finish. | 3 1/2" dia. | 4 1/2 ozs. |
| | 90 mm. dia. | 135 grms. |
| 167. Lace pattern in relief, highly polished gilt and satin finish. | 3 1/2" dia. | 4 1/2 ozs. |
| | 90 mm. dia. | 135 grms. |
| 194. Engine Turned Barleycorn pattern with floral and circular designs. Highly polished gilt finish. | 3 1/2" dia. | 4 1/2 ozs. |
| | 90 mm. dia. | 135 grms. |

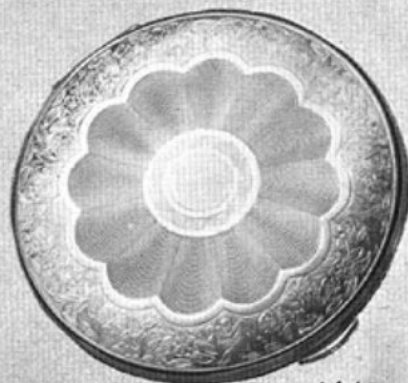
All these compacts are dome shaped. These compacts incorporate patented features, have Engine Turned reverse sides, fluted edges and Engine Turned pattern spill-proof Inner Lids.



194



167



166



136. "Margaret" Compact, fluted and scalloped with Engine Turned and floral design.

Size
4" dia. x $\frac{1}{2}$ "

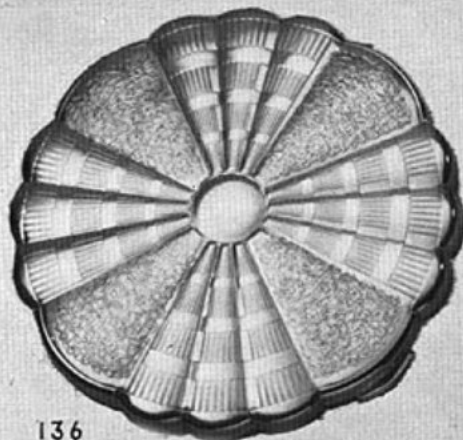
140. "Margaret" Compact, fluted and scalloped with Engine Turned design.

102 dia. x 13 mm.

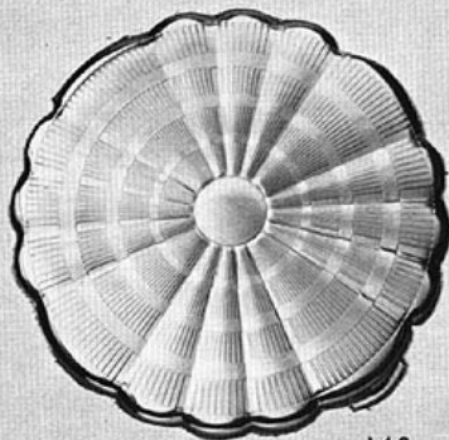
Weight
5 $\frac{1}{2}$ ozs.
155 grms.

210. Scalloped shape, Engine Turned basket pattern with circles and central initial panel.

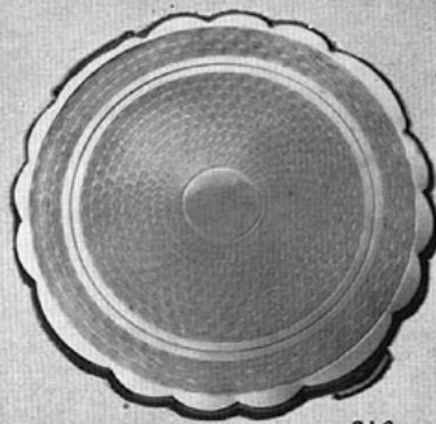
All these Compacts have Engine Turned reverse sides, and Engine Turned pattern spill-proof Inner Lids.



136



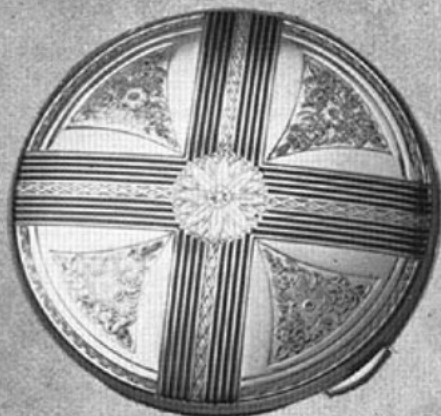
140



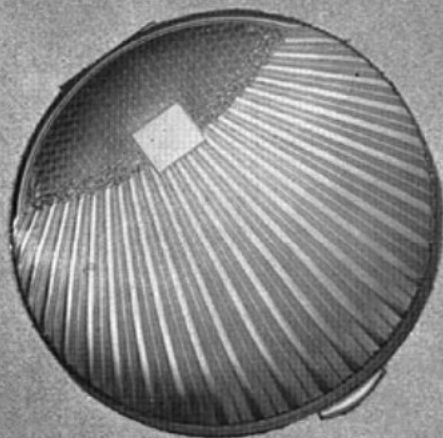
210



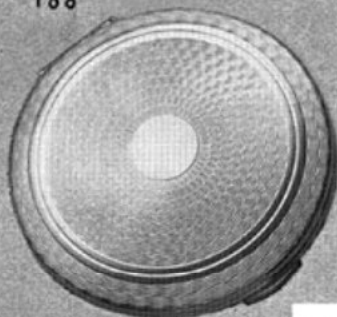
188



193



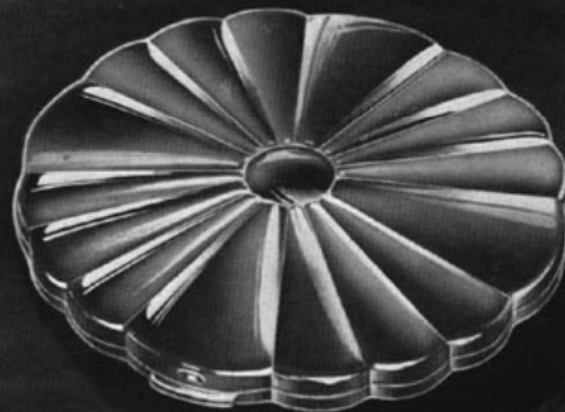
195



- | | Size | Weight |
|---|----------------------------|-------------------------|
| 193. Floral and line design, highly polished all gilt finish, also available with inlaid black enamel. | 3 1/2" dia.
90 mm. dia. | 4 1/2 ozs.
135 grms. |
| 195. Shell design with initial panel, highly polished and satin finish. This same design is also available in the smaller size No. 189. | 3 1/2" dia.
90 mm. dia. | 4 1/2 ozs.
135 grms. |
| 188. Basket pattern with circles and central initial panel. Highly polished. Same design also available in the larger size No. 168. | 3" dia. | 3 1/2 ozs. |

All these compacts are dome shaped. These compacts incorporate patented features, have fluted edges and spill proof Engine Turned pattern Inner Lids.

135. Fluted and scalloped metal compact, lustrous gold finish. Spill-proof INNER LID, with sifter, puff and pochette. 4 dia. x $\frac{1}{2}$ ins. 5½ ozs. 102 dia. x 13 mm. 155 grms.



135.

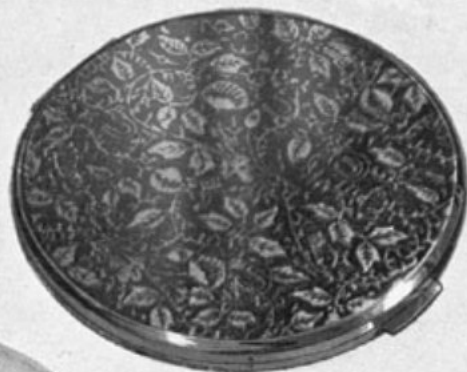




109

- 109 D.** Round Compact in lustrous, enduring, polished, gilt finish, available in four assorted silvery designs (see 104 Z and 104 F), complete with spill-proof INNER LID, puff, pochette and sifter.
- 109 L.**

3½ dia. x ¾ in.
5 ozs.
90 dia. x 9 mm.
145 grms.



109/L



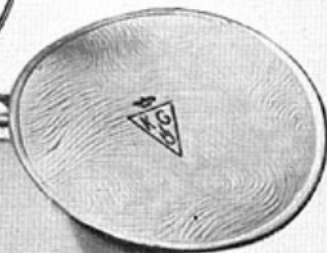
109/D

104 Z. and 104 F.

Round Compact in lustrous, enduring polished gilt finish in four assorted silvery designs (see 109D and 109L), complete with puff, sifter and pochette.

3½ dia. x ½ ins. 4½ ozs.

90 dia. x 9 mm. 125 grms.



104/Z



104/F

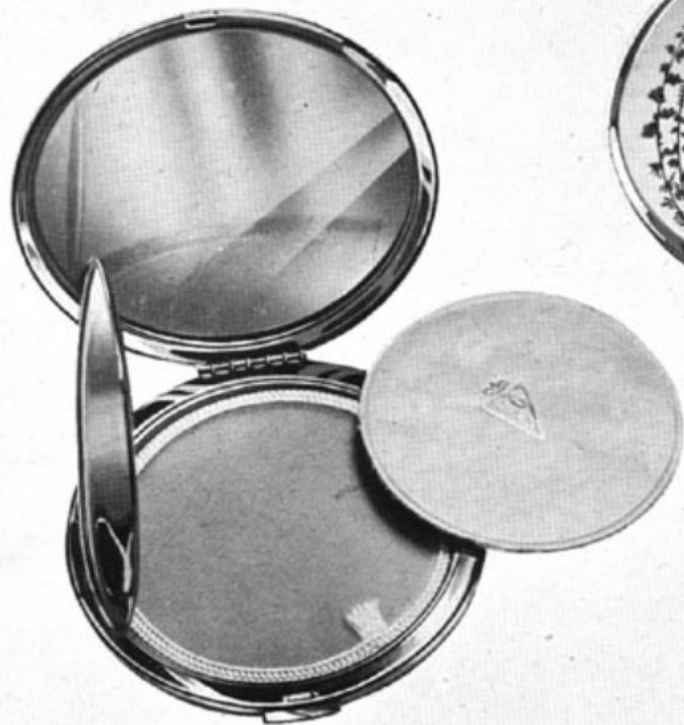


109 H.

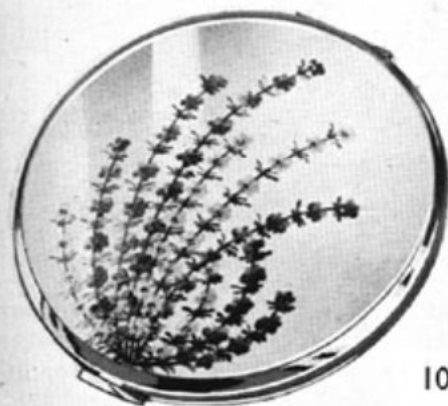
Enduring lustrous satin gilt finish
round Compact, HAND-PAINTED,
four artistic Heather and Thistle
designs (see also 104H). Spill-proof
INNER LID, complete with puff,
pochette and sifter.

3½ dia. x ½ ins. 5 ozs.

90 dia. x 9 mm. 145 grms.

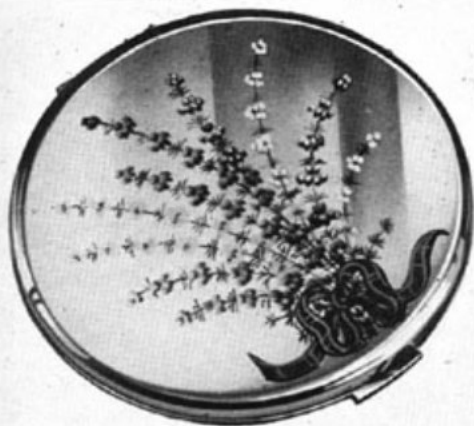


109/H



109/H





104/H



104/H

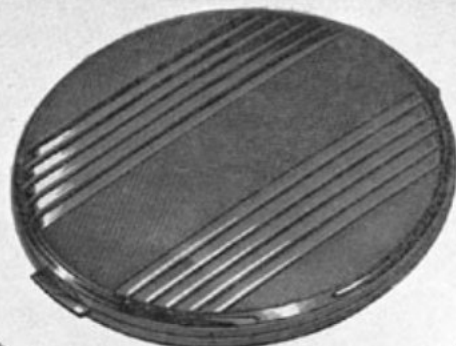
104 H.

Enduring lustrous satin gilt finish round Compact HAND-PAINTED, four artistic Heather and Thistle designs (see also 109 H) complete with puff, pochette and sifter.

3½ dia. x ½ ins. 4½ ozs.
90 dia. x 9 mm. 125 grms.



112

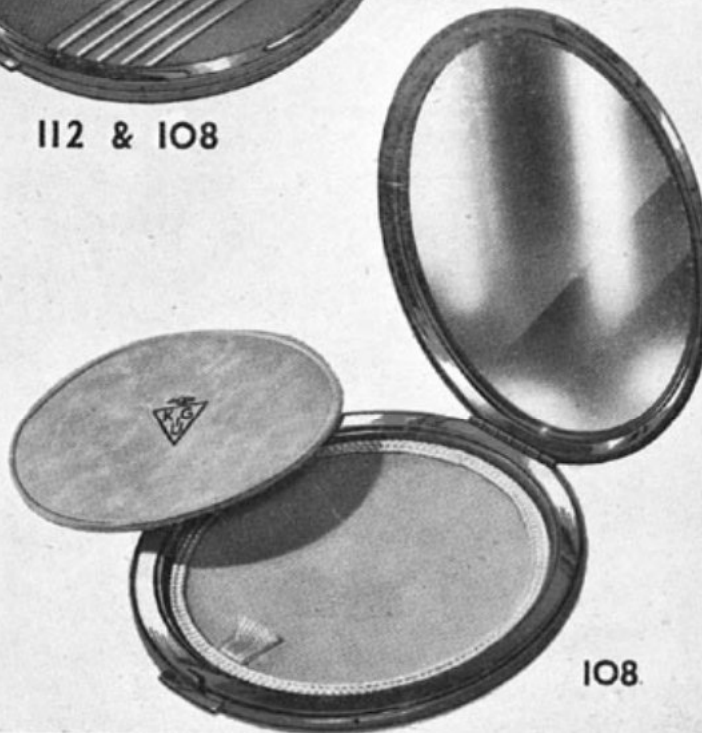


112 & 108



108. Highly polished gold coloured round
Compact, non-tarnish finish, engine
turned pattern (Lines and Barleycorn).
Sifter, puff and pochette.

112. As 108 but with Spill-proof INNER LID. 3 1/2 dia. x 1/2 ins. 4 1/2 ozs.
90 dia. x 9 mm. 125 grms.



108



110



110 & 105



105. Smart round Compact, gleaming, enduring finish, embossed rings, centre panel with assorted, silvery designs. Puff sifter and pochette

3 1/2 dia. x 1/2 ins. 4 1/2 ozs.
90 dia. x 9 mm. 125 grms.

110. As 105 but with Spill - proof INNER LID

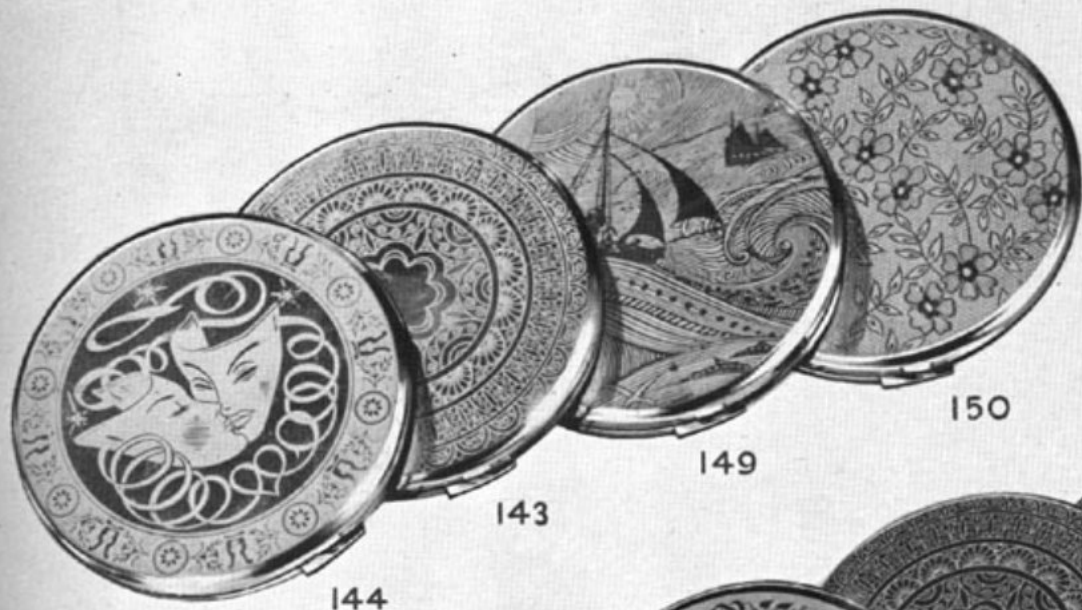
3 1/2 dia. x 1/2 ins. 5 ozs.
90 dia. x 9 mm. 145 grms.



105



130. Highly polished round gilding metal Compact, 3½ diam. x ½ ins.
 embossed floral design, HAND-PAINTED three 5 ozs.
 colours, enduring finish, spill-proof INNER LID, with 90 dia. x 9 mm.
 puff, sifter and pochette. 145 grms.



139 to 150.

An exquisite range of Round Compacts in gleaming enduring gilt finish, with artistic silvery designs. Complete with spill-proof INNER LID, puff, sifter and pochette.

3½ dia. x ½ ins. 5 ozs.

90 dia. x 9 mm. 145 grms.



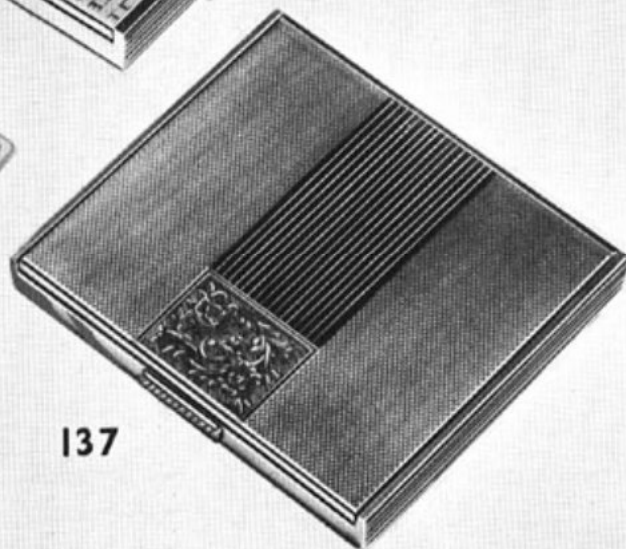
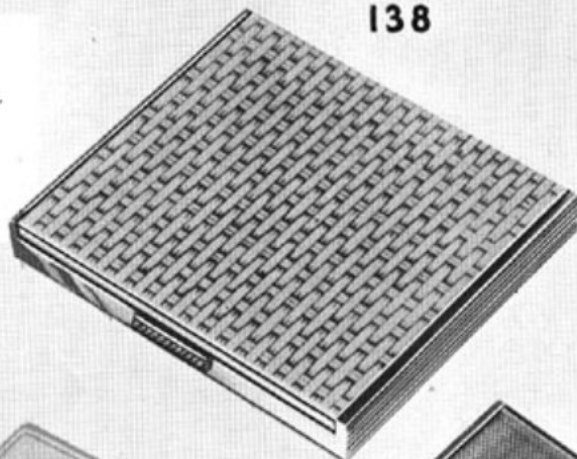
- 137.** Highly polished, oblong, gold coloured Compact. Engine turned design with rosette, non-tarnish finish with spill-proof INNER LID, sifter, puff and pochette.

- 138.** Oblong Compact, lustrous gilt finish with silvery Basket pattern design, spill-proof INNER LID, puff, pochette and sifter.

Size
 $3 \times 3\frac{1}{2} \times \frac{1}{2}$ ins.
 76 x 85 x 10 mm.

Weight
 6 ozs.
 167 grms.

138



137



119

102. Highly polished, lustrous, non-tarnish gilt finish, Square Compact, engine turned pattern with monogram panel, sifter, puff and pochette.

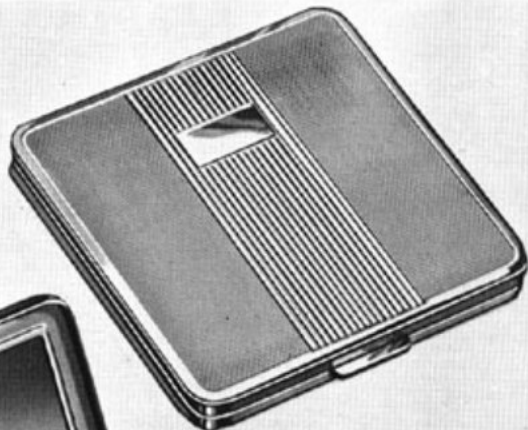
119. As 102 but with spill-proof INNER LID.

$2\frac{1}{2} \times 2\frac{1}{2} \times \frac{1}{2}$ ins. 3 $\frac{1}{2}$ ozs.
72 x 72 x 8 mm. 100 grms.

$2\frac{1}{2} \times 2\frac{1}{2} \times \frac{1}{2}$ ins. 4 ozs.
72 x 72 x 8 mm. 110 grms.

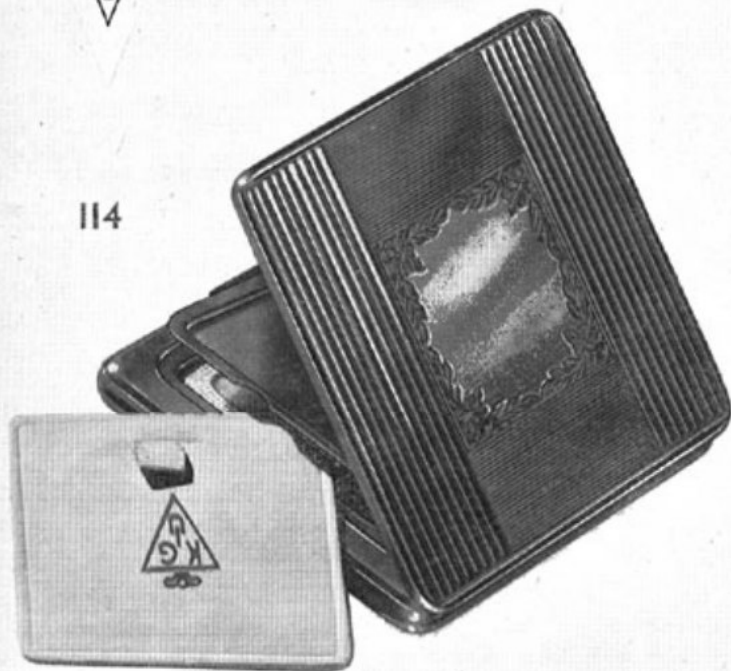


102





114



115

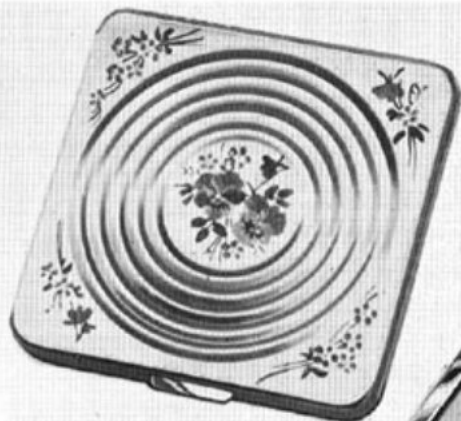


114. Square gilding metal Compact in highly polished, non-tarnishing gold finish, engine turned pattern (Lines and Central Motif) with monogram centre, spill-proof INNER LID, puff, sifter and pochette.

Size
2½ x 2½ x 1
ins.
72 x 72 x 8
mm.

115. Square gilding metal Compact in highly polished, non-tarnishing gold finish, precision detailed engine turned pattern. Floral edge, Barley-corn with initial panel. Spill-proof INNER LID, puff, sifter and pochette.

Weight
4 ozs.
112 grms.



120/H & 946/H



946/H



120/H



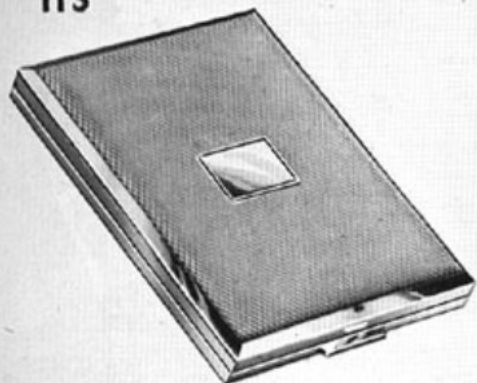
946 H. Satin gold coloured square Compact decorated with embossed rings and Floral HAND PAINTING in six assorted designs, enduring finish. Sifter, puff and pochette.

2 $\frac{1}{2}$ x 2 $\frac{1}{2}$ x $\frac{1}{4}$ ins. 3 $\frac{1}{2}$ ozs.
72 x 72 x 8 mm. 100 grms.

120 H. As 946 H but with spill-proof INNER LID.

2 $\frac{1}{2}$ x 2 $\frac{1}{2}$ x $\frac{1}{4}$ ins. 4 ozs.
72 x 72 x 8 mm. 112 grms.

113



113.

Gleaming polished gilt finish oblong Compact, engine turned Barleycorn pattern with monogram centre and spill-proof INNER LID, puff, sifter and pochette.

$2\frac{1}{2} \times 3 \times \frac{3}{4}$ ins. $3\frac{1}{2}$ ozs.
59 x 77 x 9 mm. 100 grms.

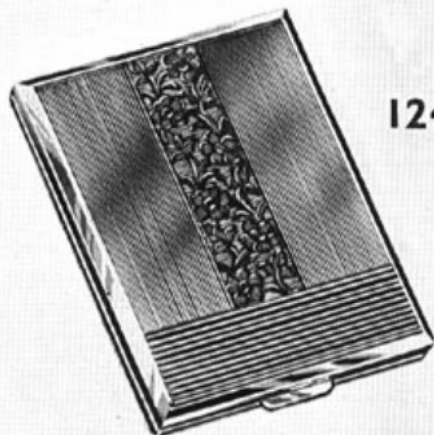
124.

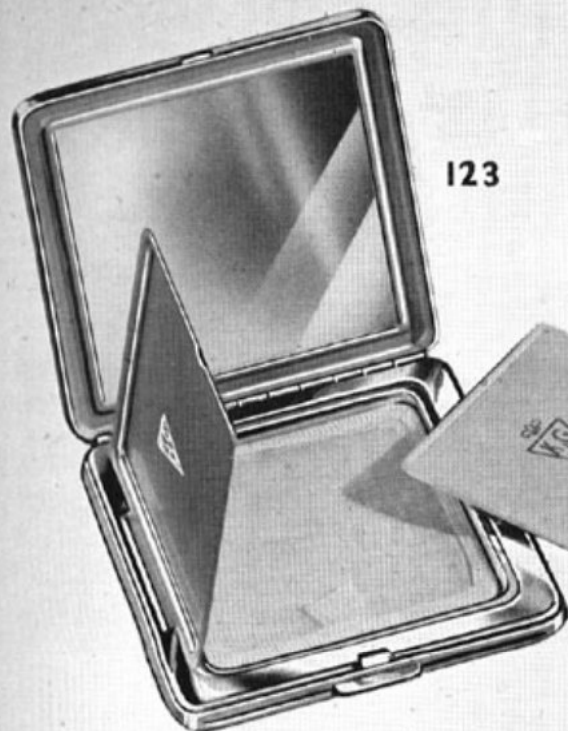
Highly polished, gilt finish, non-tarnish, oblong Compact, precision detailed engine turned pattern (flower and lines) with spill-proof INNER LID, puff, sifter and pochette.

$2\frac{1}{2} \times 3 \times \frac{3}{4}$ ins. $3\frac{1}{2}$ ozs.
59 x 77 x 9 mm. 100 grms.



124





123



118

118. Square Compact in highly polished gilding metal, embossed Zodiac design, non-tarnish finish, with puff, sifter and pochette.

$2\frac{1}{2} \times 2\frac{1}{2} \times \frac{1}{8}$ ins. 3½ ozs.
72 x 72 x 8 mm. 100 grms.

123. As 118 but with spill-proof INNER LID.

$2\frac{1}{2} \times 2\frac{1}{2} \times \frac{1}{8}$ ins. 4 ozs.
72 x 72 x 8 mm. 110 grms.



121

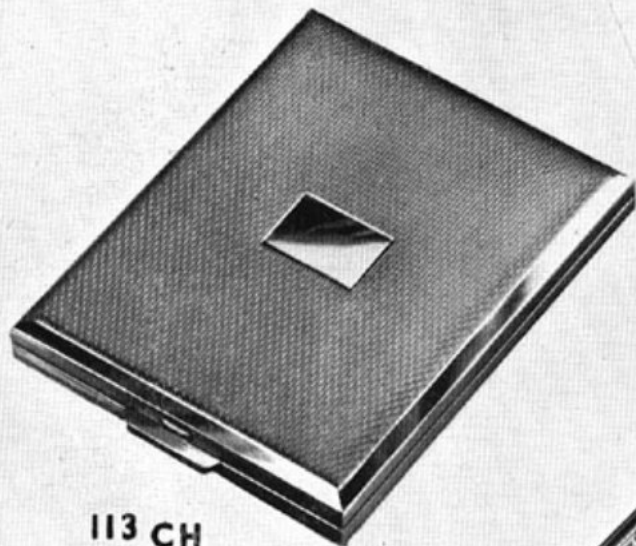
121.

Novelty Travel Case.

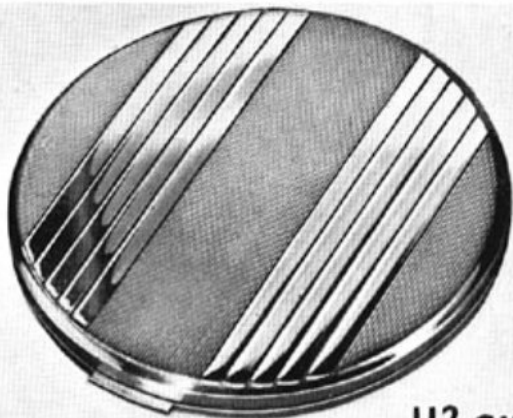
Highly polished gold colour, non-tarnish finish, oblong
 "Bon Voyage" Vanity case, precision detailed engraved
 Hogskin and Strap design. Spill-proof INNER LID, puff,
 sifter and pochette.

$3\frac{1}{2} \times 2\frac{1}{2} \times \frac{1}{2}$ ins.
 4 ozs.

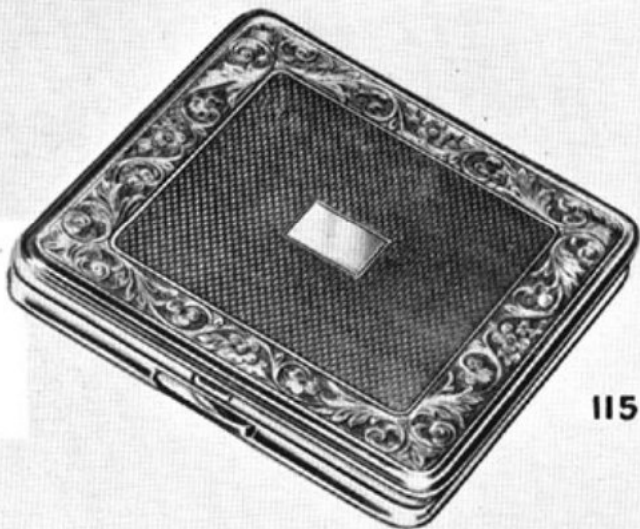
85x62x14 mm.
 110 grms.



113 CH



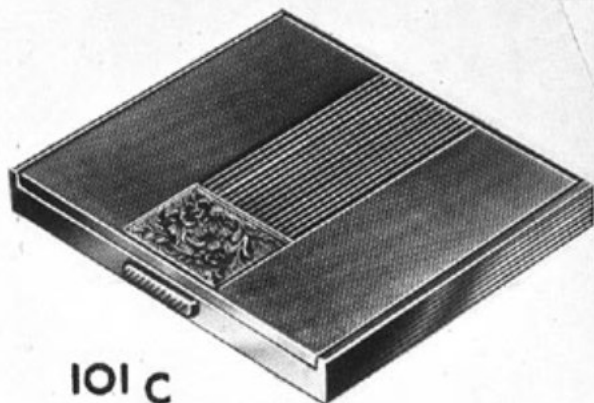
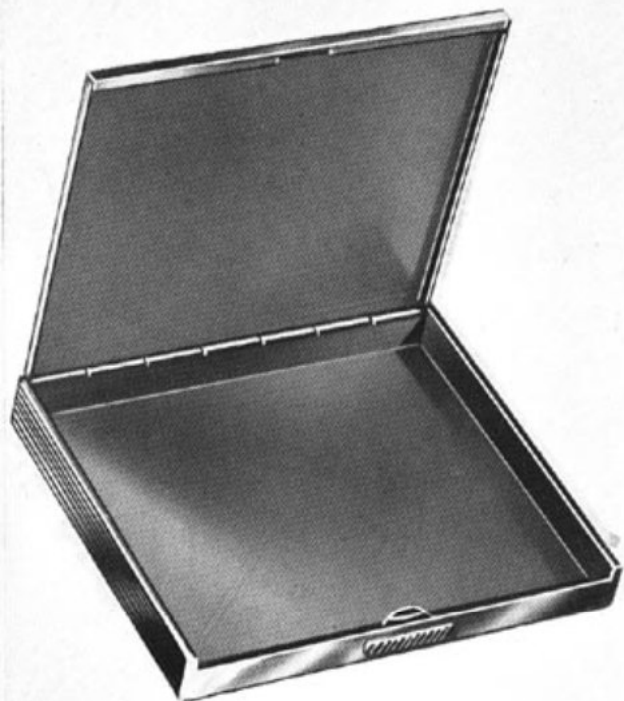
112 CH



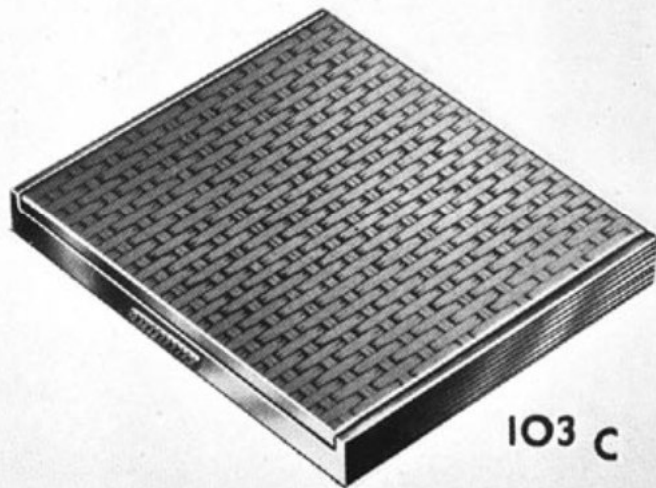
115

112 CH, 113 CH and 115 CH.

These Compacts can be supplied in highly polished, non-tarnishing **CHROMIUM** finish. Other models available in Chromium finish are: Nos. 101, 102, 108, 119, 121, 124 and 137. For particulars please see appropriate pages.

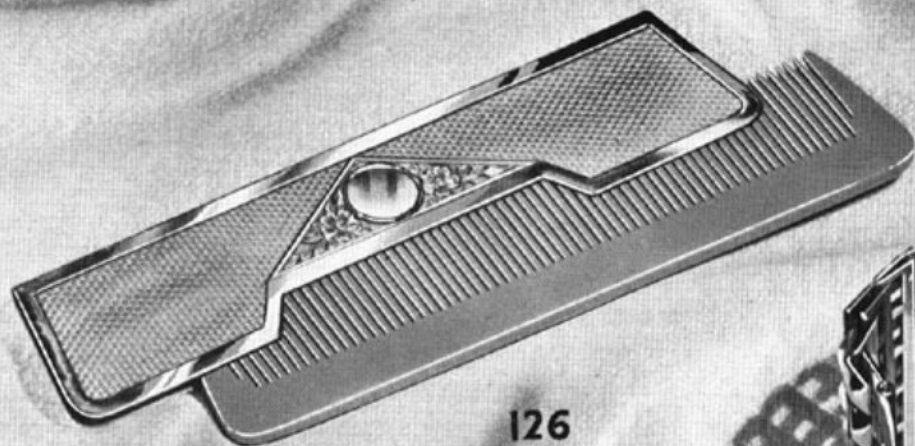


101 C

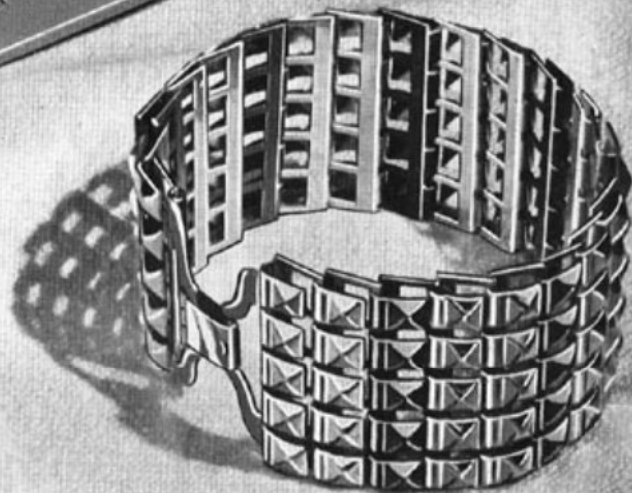


103 C

- 101 C. Highly polished, oblong, gold coloured Cigarette Case. Engine turned pattern and rosette, spring catch. Holds 10 Cigarettes. 3 x 3½ x ½ ins. 3½ ozs.
- 103 C. Oblong Cigarette Case, lustrous gilt finish with silvery basket pattern design, spring catch. Holds 10 Cigarettes. 76 x 85 x 10 mm. 100 grms.



126



116 G

116. Multi-link **Metal Bracelet**, lustrous, highly polished gilt and coloured or **CHROMIUM** finish.

1½ ozs. 43 grms.

126. Saw cut **POCKET COMB** in highly polished gold coloured **METAL CASE** in non-tarnish finish with engine turned barleycorn and floral design and initial circle.

4½ x 1½ ins. ½ oz.
113 x 30 mm. 20 grms.