




Compacts of Character
by
KIGU

IN PRESENTING this brochure we should explain that it contains only a small selection of our vast range of Powder Compacts and other products. It is merely intended to be the forerunner of a more comprehensive catalogue.

You will find in the "KIGU" range both contemporary and classical designs from the more ornate to the simple and elegant, executed with taste and discernment. Although each one is different, they have one thing in common: every "KIGU" Compact bears the unmistakable stamp of quality for which the "KIGU" name is well known the world over.

The jewel-like finish is protected by an invisible enamel coating which ensures that the gleaming lustrous finish will stand up to the most rigorous climatic conditions. All our Compacts are supplied with sifters, puffs and pochettes and boxed individually in attractive cartons.

A large number of patents, registered designs and trade marks make "KIGU" features exclusive.

It is difficult to reproduce in print the delicate beauty and rich appearance of the actual product but we hope that the illustrations will convince you that each design has an individuality of its own, which upholds our motto

"COMPACTS OF CHARACTER BY KIGU"

KIGU LIMITED

WALDO WORKS · WALDO ROAD · LONDON · NW10 · ENGLAND

TELEPHONE: LADBROKE 1042 (PBX)

TELEGRAMS: KIGU, HARLES, LONDON

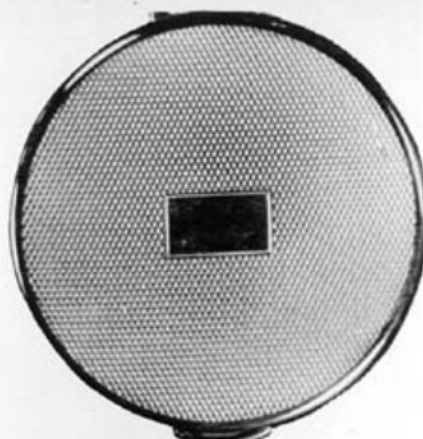
CABLES: KIGU, LONDON

Dainty "MINI" compacts fashioned by KIGU

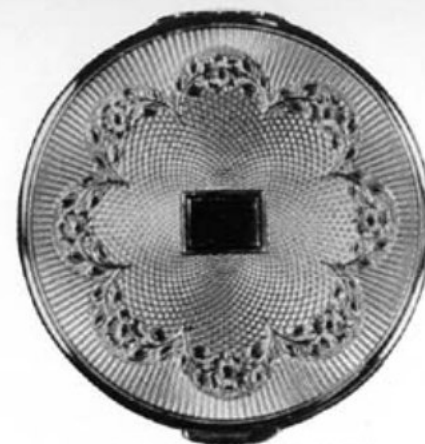
1



51-707M3.—Round "Mini" 2½"
Compact. Gilt E.T.
Shantung design with
assort. jewel mounts.



51-01.—Round "Mini"
Compact. 2½". Gilt
E.T. design.

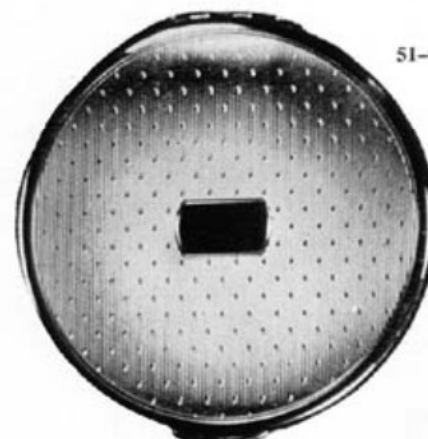


51-09GSP.—Round "Mini" 2½"
Compact. Two-tone
Gilt and Silver Plated.

51-09.—As above but all Gilt.



51-717.—Round "Mini" 2½"
Compact. Gilt E.T.
Shantung design.



51-605.—Round "Mini" 2½"
Compact. Gilt E.T.
design.



73-51.—Round "Flying Saucer"
Musical Compact, Azure
Blue with Gilt Stars.
Revolving Butterfly Winder.

64-502.—As above, but without music.



51-707.—Round "Mini" 2½"
Compact. Gilt E.T.
Shantung design.



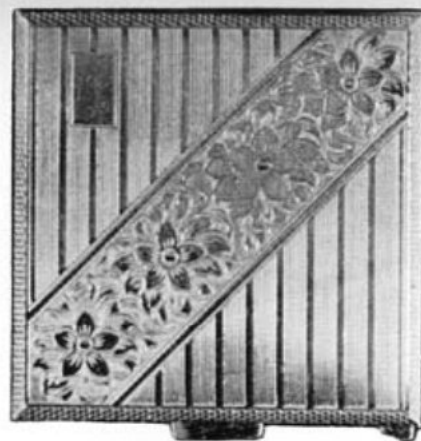
83-99.—Globe Compact, Map of
the World design in satin gilt
finish.

73-99.—As above but with music.

73-56SP.—As above with music,
but in two tone gilt and
silver plated finish.



51-21MJ.—Round "Mini" 2½" Compact. Black enamel with assort. Jewel mounts.



69-09.—"Karette" 2½" Square Compact. Gilt E.T. and engraved design.



51-29.—Round "Mini" 2½" Compact. Petit Point insert in black enamel frame.



51-30.—Round "Mini" 2½" Compact. Petit Point insert in engraved gilt frame.



51-62.—Round "Mini" 2½" Compact. Coloured Perspex insert in gilt frame.



79-21MJ.—Square "Karette" Compact with Lipstick. Black enamel with Jewel.

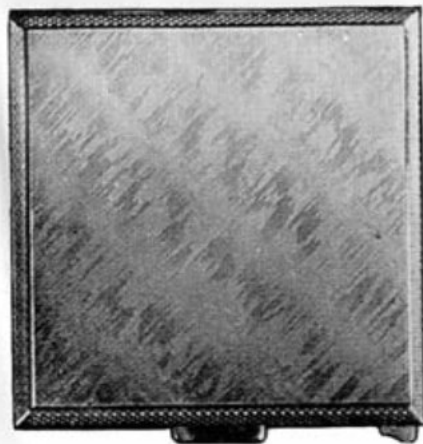


51-22.—Round "Mini" 2½" Compact. Black enamel with assorted gold patterns.

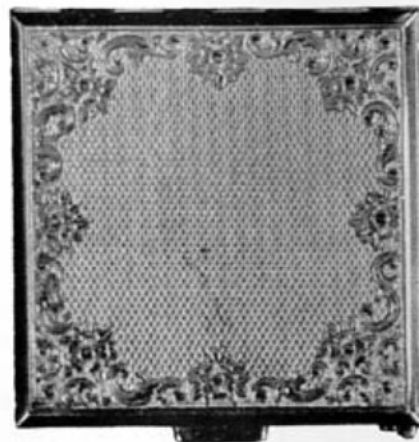


79-93.—Square "Karette" Compact with Lipstick. Gilt E.T. pattern.

The slim ———
 “KARETTE” compact
 with “remote control”
 inner lid opening.

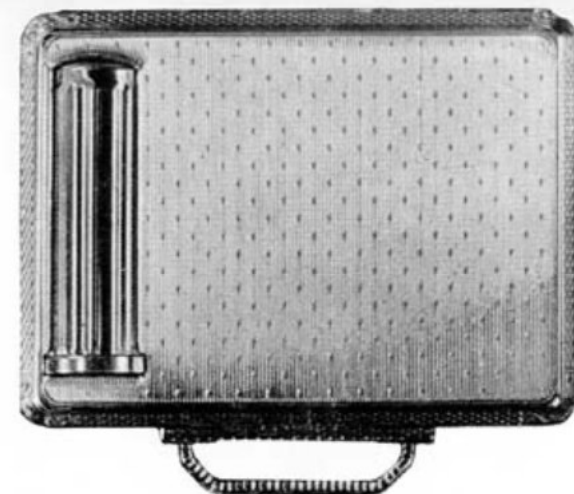


69-717.—“Karette” 2½” Square Compact. Gilt E.T. Shantung pattern.



69-07.—“Karette” 2½” Square Compact. Gilt E.T. and engraved design.

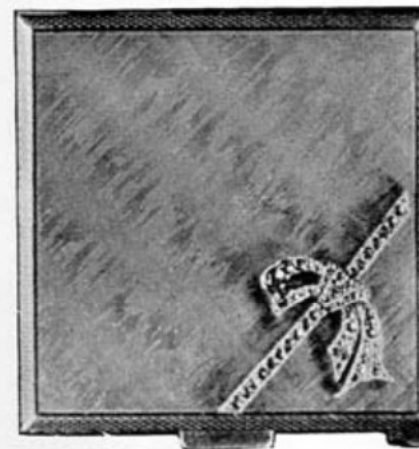
69-07GSP.—“Karette” 2½” Square Compact. Gilt and Silver Plated E.T. design.



82-05.—“Attache” type Compact with built-in Lipstick. Automatic inner lid. Gilt E.T. pattern.



32-05MJ.—“Attache” type Compact with built-in Lipstick. Automatic inner lid. Gilt E.T. pattern with Jewel mount.



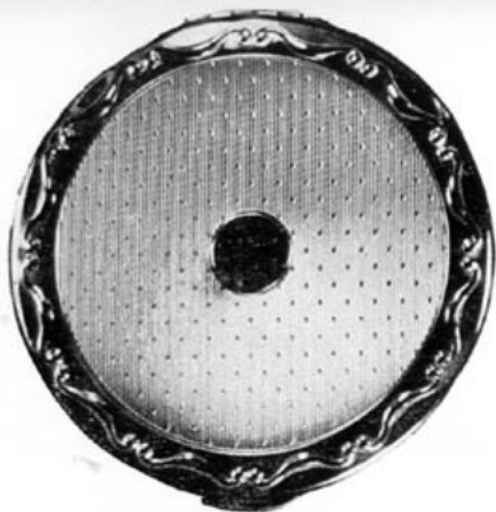
69-717MJ.—“Karette” 2½” Square Compact. Gilt E.T. Shantung pattern with Jewel mount



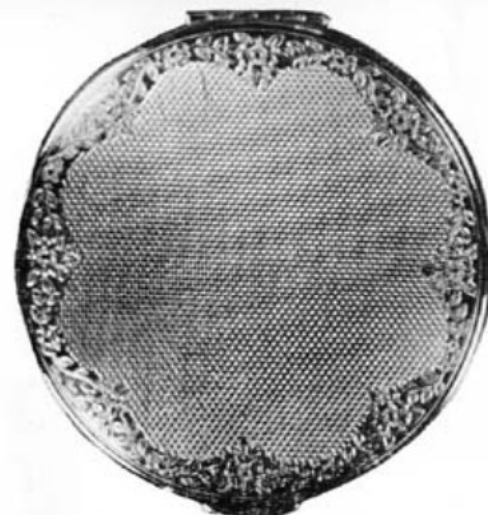
69-17.—“Karette” 2½” Square Compact. Gilt Shantung pattern with Rosette.

THE '52' SERIES

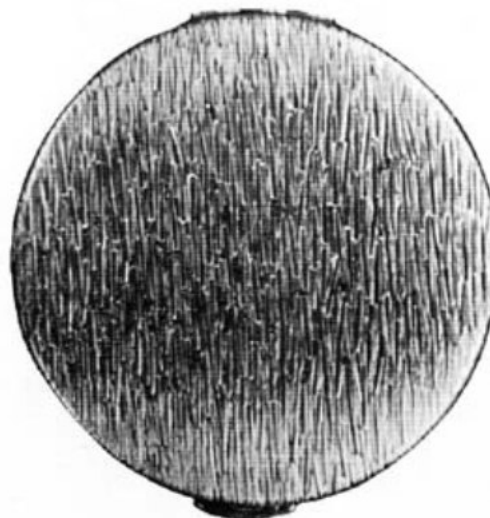
contains many engine-turned and other highly polished patterns in lasting jewellers' finish.



52-1665.—Round Compact 3".
"Spots" design in fancy
embossed edge in Gilt.



52-67.—Round Compact 3".
Gilt E.T. design with
engraved border.



52-716.—Round Compact 3".
Gilt. "Bark" motif.



52-605.—Round Compact 3".
Gilt E.T. design.



52-06.—Round Compact 3".
Lace pattern in
relief.



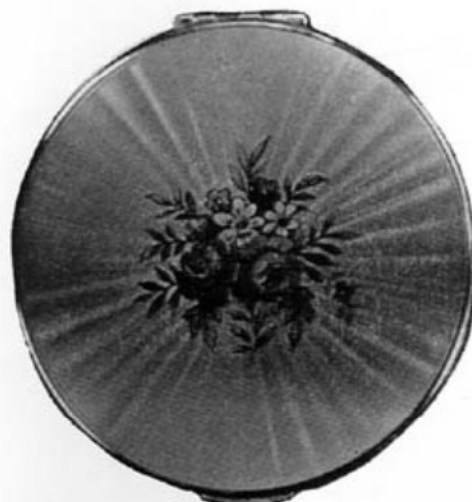
52-04.—Round Compact 3".
Gilt E.T. design.

Some of the Colourful designs in our '52' Series



52-739SP.—Round Compact 3".
Ballet design on
Silver Plated top.

52-739.—Same as above on Gilt
top.



52-7747.—Round Compact 3".
Silver Plated throughout.
Coloured design on Blue
Green or Pink enamelled
top.

52-747.—Same as above but top
only Silver plated.



52-25MJ.—Round Compact 3".
Azure blue with assorted
fashion Jewel mounts.



52-65.—Round Compact 3".
Perspex inserts. Assorted
ship designs in Gilt frame.



52-62.—Round Compact 3".
Coloured Perspex
insert in E.T. Gilt frame.

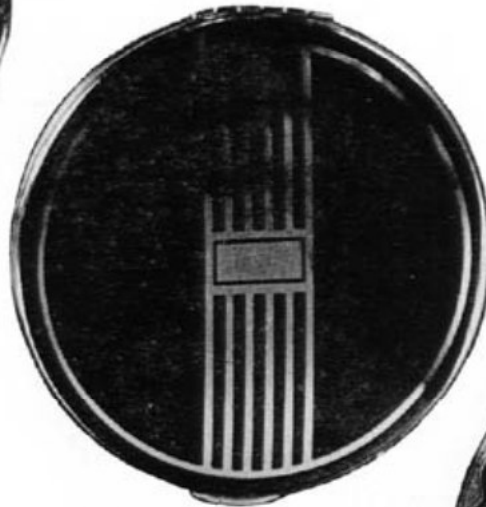


52-763.—Round Compact 3".
Shamrock Perspex insert
in Gilt E.T. pattern frame.

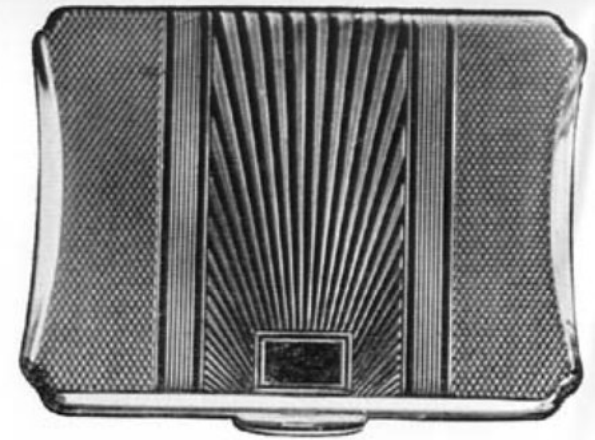
Some more delightful '52' types
and the Elegant Fancy Oblong
Shape.



52-103.—Round Compact 3".
Gilt engraved
pattern, raised edge.



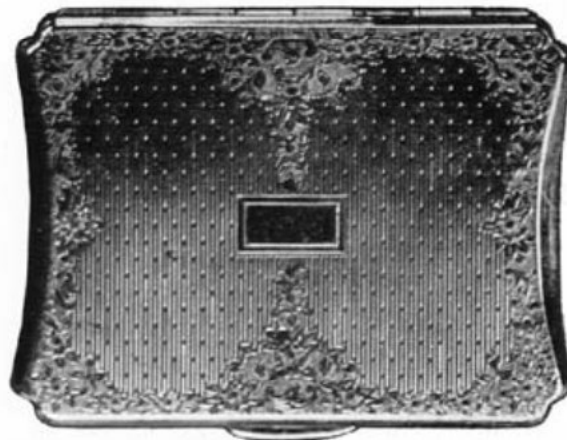
52-28.—Round Compact 3".
Black enamel with
Gilt lines and initial
panel.



67-01.—Fancy Oblong Compact
Gilt E.T. design. Size
2½" x 3¼"



52-717.—Round Compact 3".
Gilt E.T. Shantung
pattern and engraved
design.



67-09.—Fancy Oblong Compact
Gilt E.T. and engraved
design. Size 2½" x 3¼"



52-620.—Round Compact 3".
Inlaid stones on E.T.
Gilt Top.

52-620GSP.—Same as above but
Gilt engraving on
silver plated E.T.
pattern.

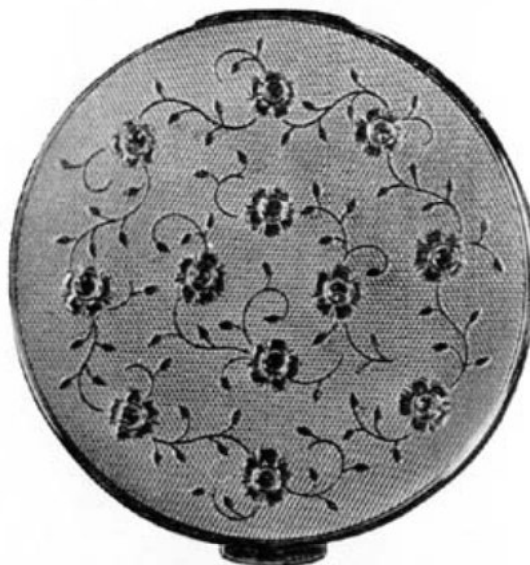
For your chosen one
a "Cherie"
heart shape!



58-30.—Heart Shape Compact.
Petit Point insert in
Gilt engraved frame.

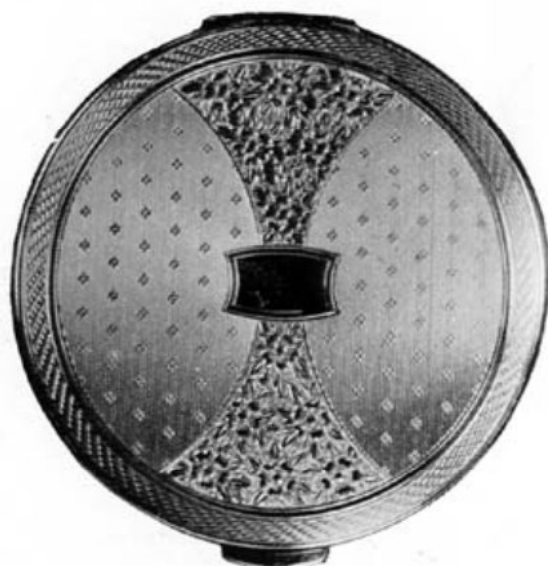


58-717.—Heart Shape Compact.
Gilt E.T. and engraved
design on Shantung pattern.



53-620.—Round 3½" Compact.
Engraved design with
inlaid stones on E.T.
pattern.

53-620GSP.—Same as above but
Gold and Silver plated.



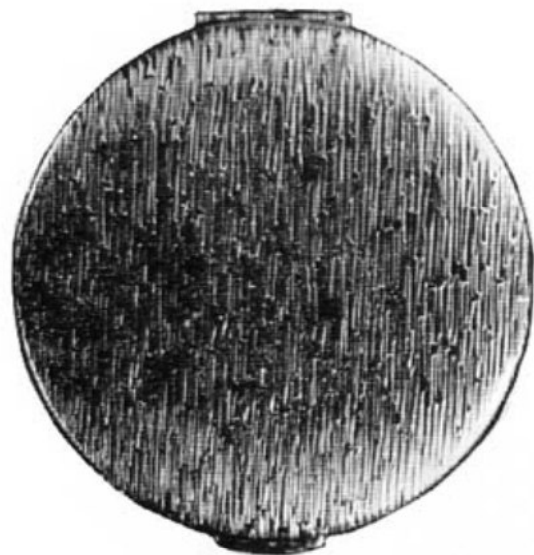
53-10.—Round 3½" Compact.
Gilt E.T. design and
engraved pattern.

larger compacts
from our '53' series

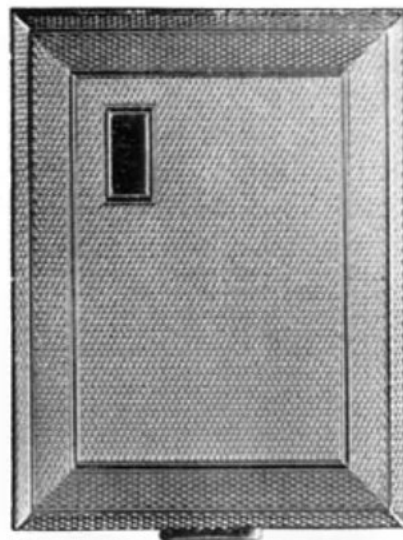


53-31.—Round 3½" Compact.
London views on satin
Gilt background.

Superbly slim Comp



70-716.—Slender $3\frac{1}{8}$ " Round Compact.
Gilt "Bark" pattern.



55-03.—Oblong Compact.
 $2\frac{1}{4}$ " x 3". Gilt E.T.
design.



70-717.—Slender $3\frac{1}{8}$ " Round Compact
engraved design on Gilt
Shantung pattern.



70-28.—Slender $3\frac{1}{8}$ " Round
Compact. Black enamel
with inlaid Gilt engraved
pattern and coloured stones.



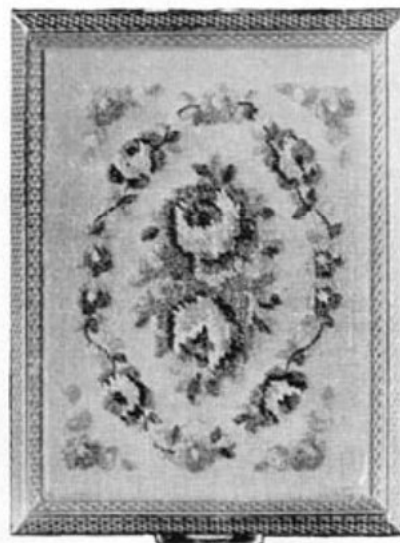
70-27.—Slender $3\frac{1}{8}$ " Round Compact.
Black enamel and E.T.
gilt design.



70-26.—Slender $3\frac{1}{8}$ " Round Compact.
Black enamel and gilt
chased design.



70-536.—Slender 3½" Round Compact. Assorted Flowers on Blue Azure background.



55-30.—Oblong Compact. 2½" x 3". Petit Point insert Gilt E.T. pattern.



70-01.—Slender 3½" Round Compact. Gilt raised floral pattern.

70-01SP.—Same as above Silver plated.



70-739SP.—Slender 3½" round Compact. "Pas de Quatre" ballet design on Silver Plated Top.



70-7747.—Slender 3½" Round Compact. Silver Plated throughout. Coloured design on Blue, Green or Pink enamelled top.

70-747.—Same as above with Gilt reverse side and Gilt container.



70-749.—Slender 3½" round Compact. Coloured design on Pink or Blue Enamel and Silver Plated top.

70-749A.—Same coloured design but top Silver Plated only.

Smart and Elegant PARTY CASES
combining

Powder Compacts, Cigarette Case and
 Lipstick Case (exchangeable).

Snake-Type chain gives
 Evening Bag Effect.



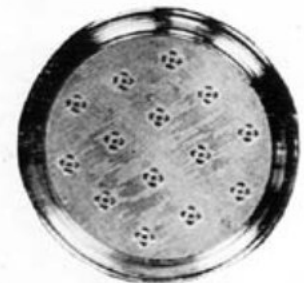
74-30.—Party Case with
 Petit Point insert.
 Compact, Cigarette Case and
 Lipstick Case.



74-08.—Party Case. Gilt
 engraved design.
 Compact, Cigarette Case
 and Lipstick Case.



74-83.—Party Case with
 Mother of Pearl.



50-17.—Pillbox. Gilt E.T.
 design.



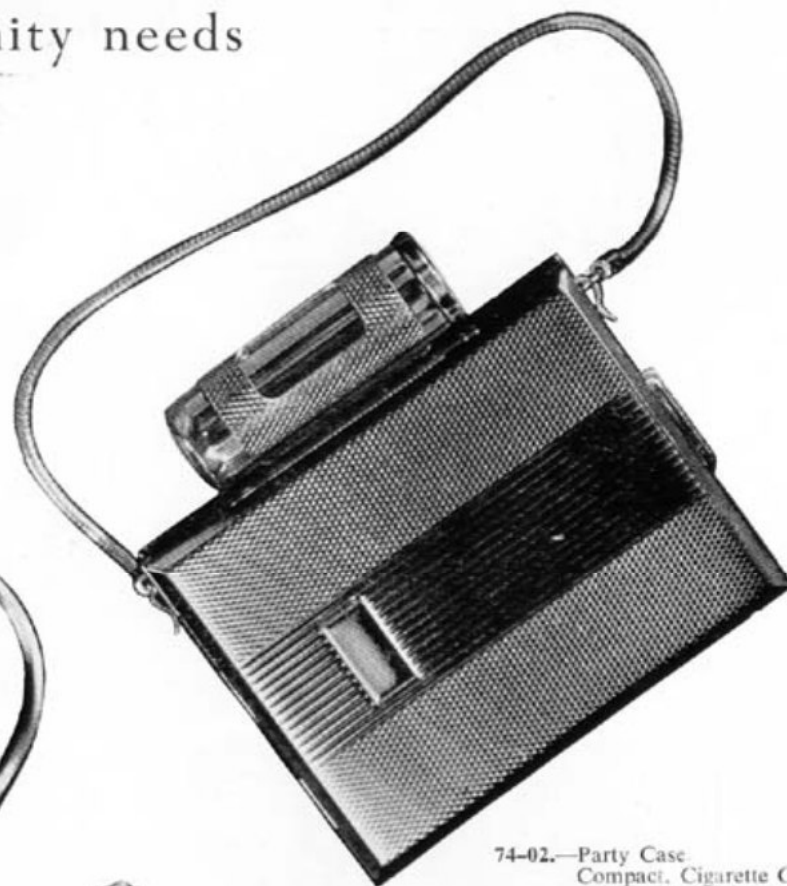
50-717.—Pillbox. Gilt E.T.
 design.

Pill Boxes

More Party-Cases for her vanity needs



74-33.—Party Case. Gilt
E.T. design.



74-02.—Party Case.
Compact, Cigarette Case
and Lipstick Case, E.T.
design.



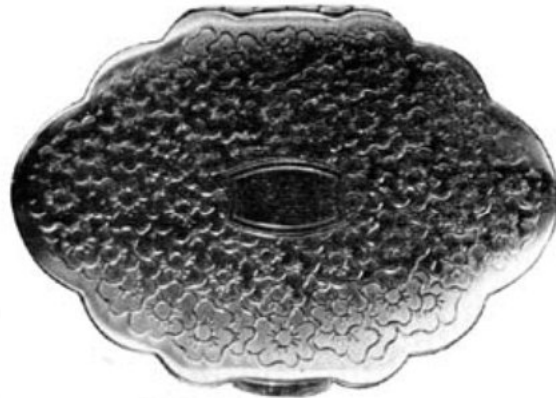
74-717.—Party Case. Gilt
"Shantung" pattern.



50-08.—Pillbox. Gilt
engraved design with
initial panel

"Bolero" —

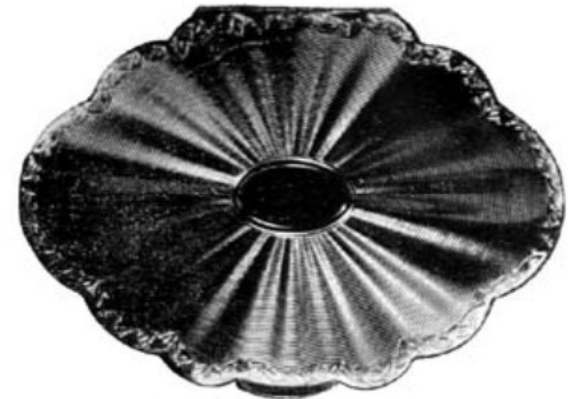
for women of
discriminating taste.



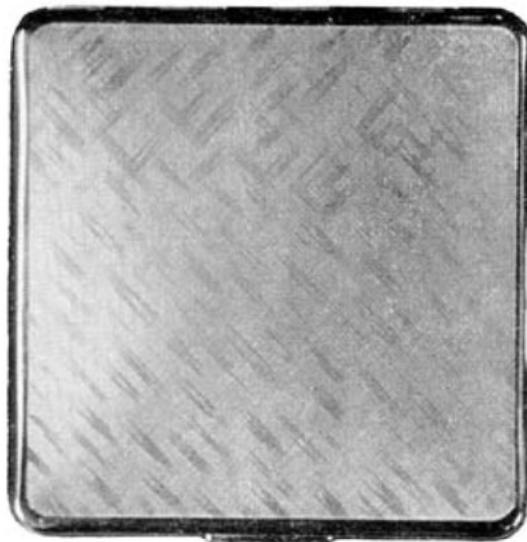
78-11.—Fancy Oval Compact.
Gilt floral pattern.



78-23.—Fancy Oval Compact.
Black enamel and gilt
design.



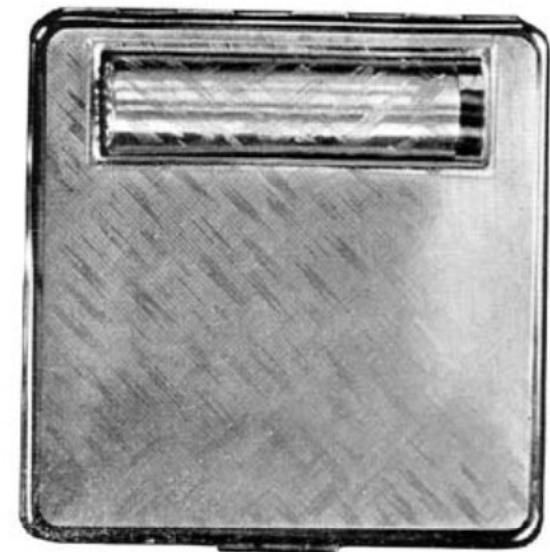
78-02.—Fancy Oval Compact.
Gilt E.T. design with
engraved border.



57-717.—Domed Square Compact.
 $\frac{3}{4}$ ". Gilt Shantung design.



56-58.—Square Compact $2\frac{1}{4}$ ".
"London Views" in
relief.



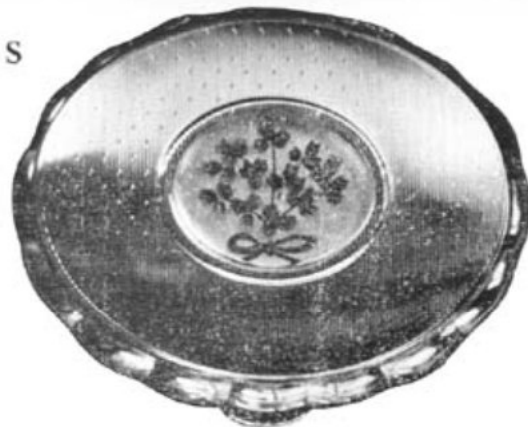
88-717.—Square Compact with
Built-in Lipstick
(11 or 13 m.m.).
Gilt Shantung pattern.

Musical Compacts

"Minuette" Series

fitted with excellent Swiss movements.

Great variety of Tunes



73-763.—Musical "Minuette" Compact with coloured Perspex insert in Gilt E.T. pattern.

76-763.—As above but without Music.



73-03.—Musical "Minuette" Compact Gilt E.T. pattern.

76-03.—As above but without Music.



73-20.—Musical "Minuette" Compact. Gilt engraved design.

76-20.—As above but without Music.



73-21MJ.—Musical "Minuette" Compact. Black enamel with assorted Jewels.

76-21MJ.—As above but without Music.



73-26.—Musical "Minuette" Compact. Black enamel and gilt engraved design.

73-28.—Musical "Minuette" Compact. As above with inlaid stones.



73-02MJ.—Musical "Minuette" Compact. Gilt E.T. pattern with assorted Jewel mounts.

76-02MJ.—As above but without Music.

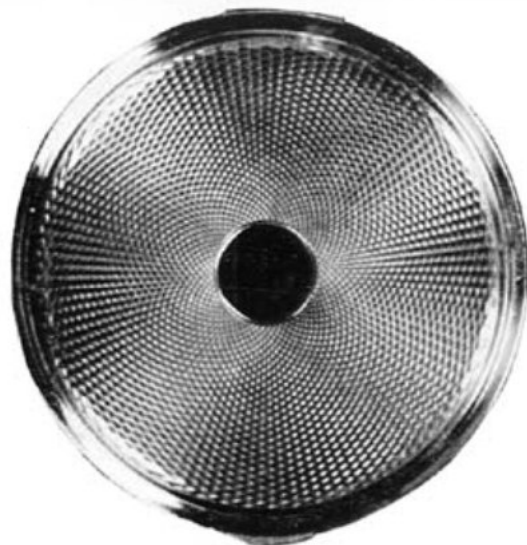


76-06CAM.—Deep Scalloped Oval Compact. E.T. pattern with simul. cameo insert.

73-06CAM.—As above but with Music.

Convertible . . . "Dual-Purpose"

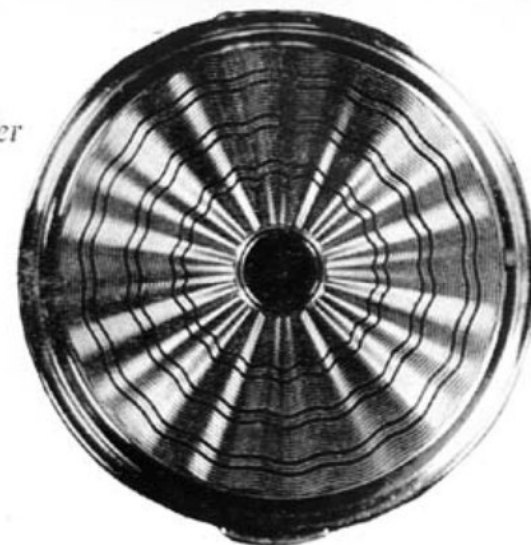
Compacts designed to take Solid or Loose Powder



17-12.—Convertible
"Dual-Purpose"
Compact for solid
or loose powder E.T.
design.



71-08.—Convertible "Dual Purpose"
Compact for solid or
loose powder. Gilt
with scroll design.



17-16.—Convertible
"Dual-Purpose"
Compact for solid
or loose powder E.T.
design.



04-631.—Inexpensive Compact
with inner lid.
Coloured design
"London Views."



04-750.—Inexpensive Compact
with Inner Lid.
Assorted coloured dog
designs.



17-48.—Convertible
"Dual-Purpose"
Compact for solid
or loose powder.
Coloured lace design.

Just a few of the many
matching sets available
from

KIGU



T.B. "B."—Trinket Box covered simul. Luxon, Pony or Pigskin, complete with Compact, Comb in Case and Lipstick Case. (Compact 70-28)



T.B. "B."—Trinket Box covered simul. Luxon, Pony or Pigskin, complete with Compact, Comb in Case and Lipstick Case. (Compact 67-01).



T.B. "B."—Trinket Box covered simul. Luxon, Pony or Pigskin, complete with Compact, Comb in Case and Lipstick Case. (Compact 70-27)

KIGU COMPACTS

PRICE LIST

	Cat. No.		Retail Price s. d.
Page 1.	51-707MJ	24 0
	51-01	14 6
	51-09GSP	24 0
	51-09	14 6
	51-717	16 0
	51-605	14 6
	73-51	110 6
	62-502	31 6
	51-707	16 0
	83-99	26 6
	73-99	101 0
	73-56SP	105 6
Page 2.	51-21MJ	27 6
	69-09	26 6
	51-29	21 9
	51-30	21 9
	51-62	24 0
	79-21MJ	45 9
	51-22	19 6
	79-03	32 6
Page 3.	69-717	24 0
	69-07	21 9
	69-07GSP	29 0
	82-05	50 6
	82-05MJ	60 0
	69-717MJ	32 6
	69-17	24 0
Page 4.	52-1605	21 0
	52-07	19 6
	52-716	21 0
	52-605	19 6
	52-04	19 6
	52-06	21 9
Page 5.	52-739SP	24 0
	52-739	19 6
	52-7747	37 0
	52-25MJ	32 6
	52-65	31 6
	52-763	26 6
	52-62	26 6
	52-747	29 0

	Cat. No.		Retail Price s. d.
Page 6.	52-103	21 0
	52-28	24 0
	67-01	38 6
	67-09	38 6
	52-717	21 0
	52-620	26 6
	52-620GSP	33 9
Page 7.	58-30	43 6
	58-717	33 9
	53-620	33 9
	53-620GSP	43 6
	53-10	26 6
	53-31	29 0
Page 8.	70-716	26 6
	55-03	24 0
	70-717	26 6
	70-28	38 6
	70-27	29 0
	70-26	31 6
Page 9.	70-536	29 0
	55-30	33 9
	70-01	26 6
	70-01SP	33 9
	70-739SP	31 6
	70-7747	42 0
	70-747	33 9
	70-749A	31 6
	70-749B and C	33 9
Page 10.	74-30	72 0
	74-08	60 0
	74-83	77 0
	50-17	5 6
	50-717	5 6

	Cat. No.		Retail Price s. d.
Page 11.	74-03	60 0
	74-02	60 0
	50-08	5 6
	74-717	60 0
Page 12.	78-11	38 6
	78-23	38 6
	78-02	36 0
	57-717	36 0
	56-58	29 0
	88-717	52 6
Page 13.	73-763	132 0
	76-763	43 6
	73-03	126 0
	76-03	36 0
	73-20	126 0
	76-20	36 0
	73-21MJ	142 0
	76-21MJ	52 6
	73-26	132 0
	73-28	140 0
	73-02MJ	140 0
	76-02MJ	50 6
	76-06Cam	48 0
	73-06Cam	137 0
Page 14.	17-12	14 6
	71-08	19 6
	17-16	14 6
	04-631	16 0
	04-750	16 0
	17-48	16 0
Page 15.	Trinket Box "B" 70-27	73 9
	Trinket Box "B" 67-01	79 3
	Trinket Box "B" 70-28	83 8